

# Mini Beads Tassel Necklaces



## YOU WILL NEED:

### Pegboards:

Small mini beads square

### Other:

Large Mini Beads Tray  
# 80-17537\*

Iron and ironing paper

Mini beads tweezers

1 skein coordinating embroidery floss  
for tassels on each necklace

Large-eye blunt needle

Additional floss for cording, or a chain or ribbon

1 Jump ring per necklace

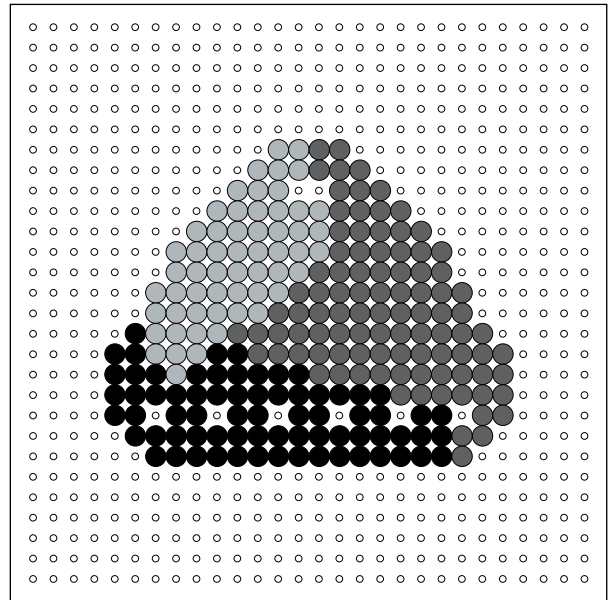
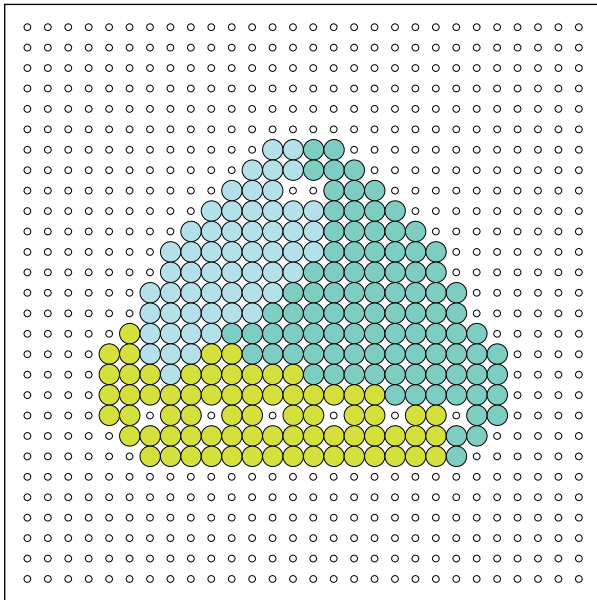
Needle-nose pliers

### Mini Bead Colors:

- Prickly Pear - 71\*
- Light Green - 96\*
- Toothpaste - 57
- Grey - 57
- Dark Grey - 96
- Black - 71

## Instructions

1. Slide the actual-size pattern underneath the pegboard and place your beads as shown.
2. Ask an adult to fuse your designs—see below for further instructions.
3. Assembly: see page 2.



## Fusing Instructions—Only Adults Iron

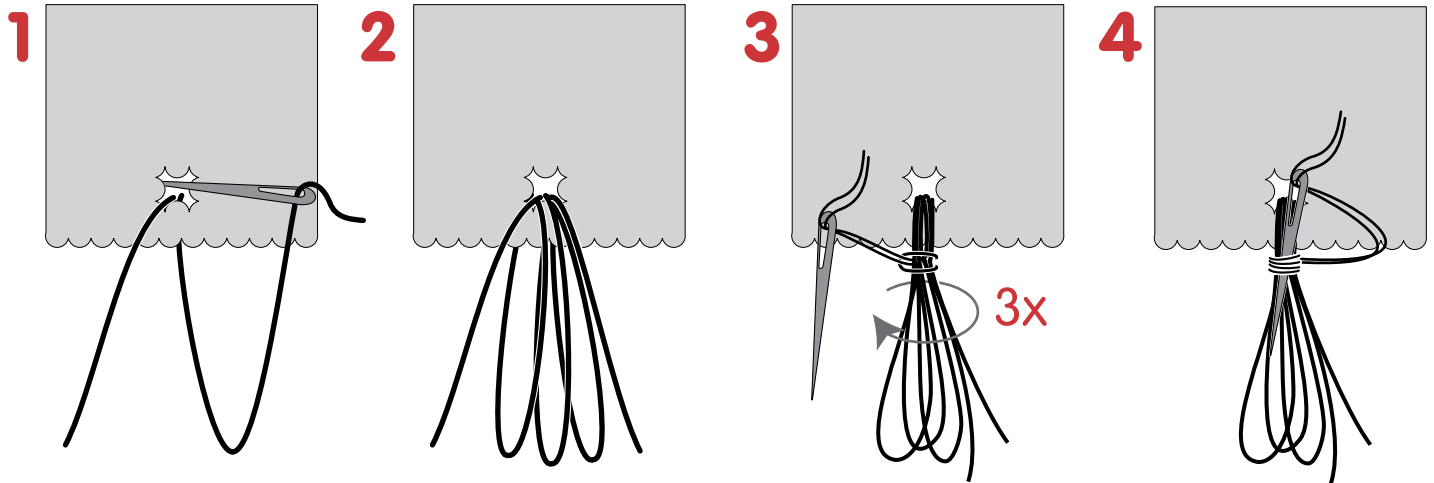


1. Place your pegboard on a flat, heat-safe surface.
2. Set a household iron to the medium setting. Place ironing paper over the pegboard. In a circular motion, begin to iron the project. Do not press down with the iron. As the beads begin to fuse, you will see circles of the beads start to show through the paper. When ironed properly, the beads will still have an open center. Let the design cool.
3. Remove the paper and bead design from the pegboard. Flip the design over to expose the non-fused side. Repeat step two. Let cool completely. Your pegboard and ironing paper are reusable.

**NOTE:** Beads need heat for about 10 seconds per side to fuse evenly. Lift the paper occasionally to see how the beads are fusing. Depending on the size of the project, additional heating time may be required. DO NOT OVER-IRON the beads as it will make the centers of the beads close and can make the assembly you do with your project more challenging.

## ASSEMBLY

**Tassels:** Add a tassel through each hole in the bottom of your design.



1 Thread the needle with two 30" pieces of floss and treat them as one. Leaving a 3" tail, run the needle through the hole to create a loop.

2 Continue to make a total of three loops, again leaving a tail at the end. This makes the bundle.

3 Fold a 10" piece of floss in half and thread the cut ends into the needle. Pass the ends through a loop around the bundle, then wrap the floss tightly around the bundle three times.

4 Run the needle through the middle of the bundle. Trim the tassel so it is 2" long. Separate the individual strands of floss with the needle.

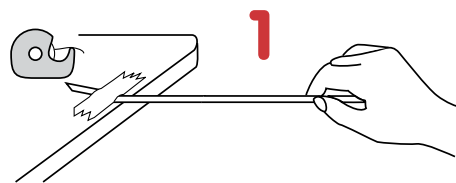
## Cording

The cord for your necklace can be purchased chain, ribbon, or cord, or you can make your own cord from embroidery thread. Here's how:

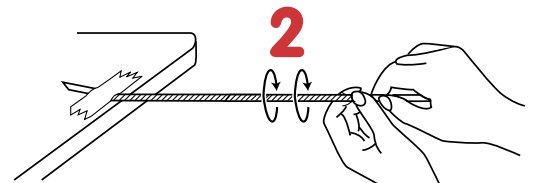
For an 18" cord, start with about 36" of thread. You can use multiple colors or all one color. Keep in mind the number of lengths of thread you start with will double when the cord is finished. We suggest you practice with a short length to learn the technique. It might be helpful to have another person assist you.

### Final Assembly

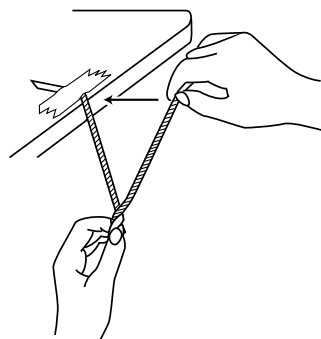
Add a jump ring through the opening at the top of your design. After you have made your cord, slip it through the jump ring. Tie a knot with the ends below the first knot, then cut off the first knot.



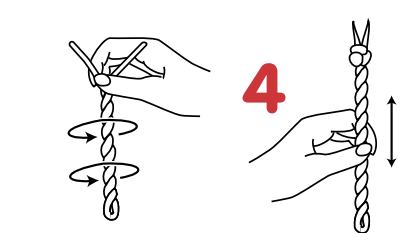
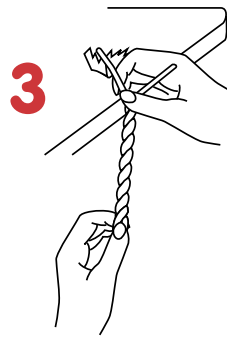
1 Tape one end of the strands securely to a table or counter. Hold the other end so the thread is taut.



2 Twist the other end until the strands are tightly twisted. When you think you have enough twists, twist some more! The more twists, the tighter the cord will be.



3 Grab the middle of the thread with one hand. Bring the ends together with your other hand.



4 Release the middle and allow the strands to twist. Slide your fingers up and down the cording to even out the twists. Knot the ends together in a single overhand knot.