



**YOU WILL NEED:**

**Pegboards:**

24 large squares\*\*\*

**Other:**

- 2 large pieces of cardboard 27" x 34"
- Scissors
- Clear tape

**Optional:**

- Mat board or foam core for mounting
- Quick-drying adhesive

**Bead Colors:**

- |                       |                         |
|-----------------------|-------------------------|
| ○ Peach - 137         | ● Light Green* 1748     |
| ○ Plum - 334          | ● Parrot Green** - 2463 |
| ● Red - 385           | ● Light Blue - 767      |
| ● Cranapple - 131     | ● Dark Blue* - 1288     |
| ● Orange - 618        | ● Pastel Lavender - 779 |
| ● Butterscotch - 588  | ● Purple - 667          |
| ● Rust - 862          | ● Sand - 177            |
| ● Cheddar - 526       | ● Tan - 190             |
| ● Yellow - 341        | ● Light Brown - 137     |
| ● Pastel Yellow - 405 | ● Brown - 908           |
| ● Prickly Pear - 988  | ● Dark Grey - 36        |
| ● Kiwi Lime* - 1048   | ● Black - 571           |
| ● Dark Green - 585    | ○ White - 194           |
| ● Toothpaste* - 1108  |                         |

\* 2 bags of beads needed for these colors

\*\* 3 bags of beads needed for this color

\*\*\*6 of the large square pegboard 4-packs needed

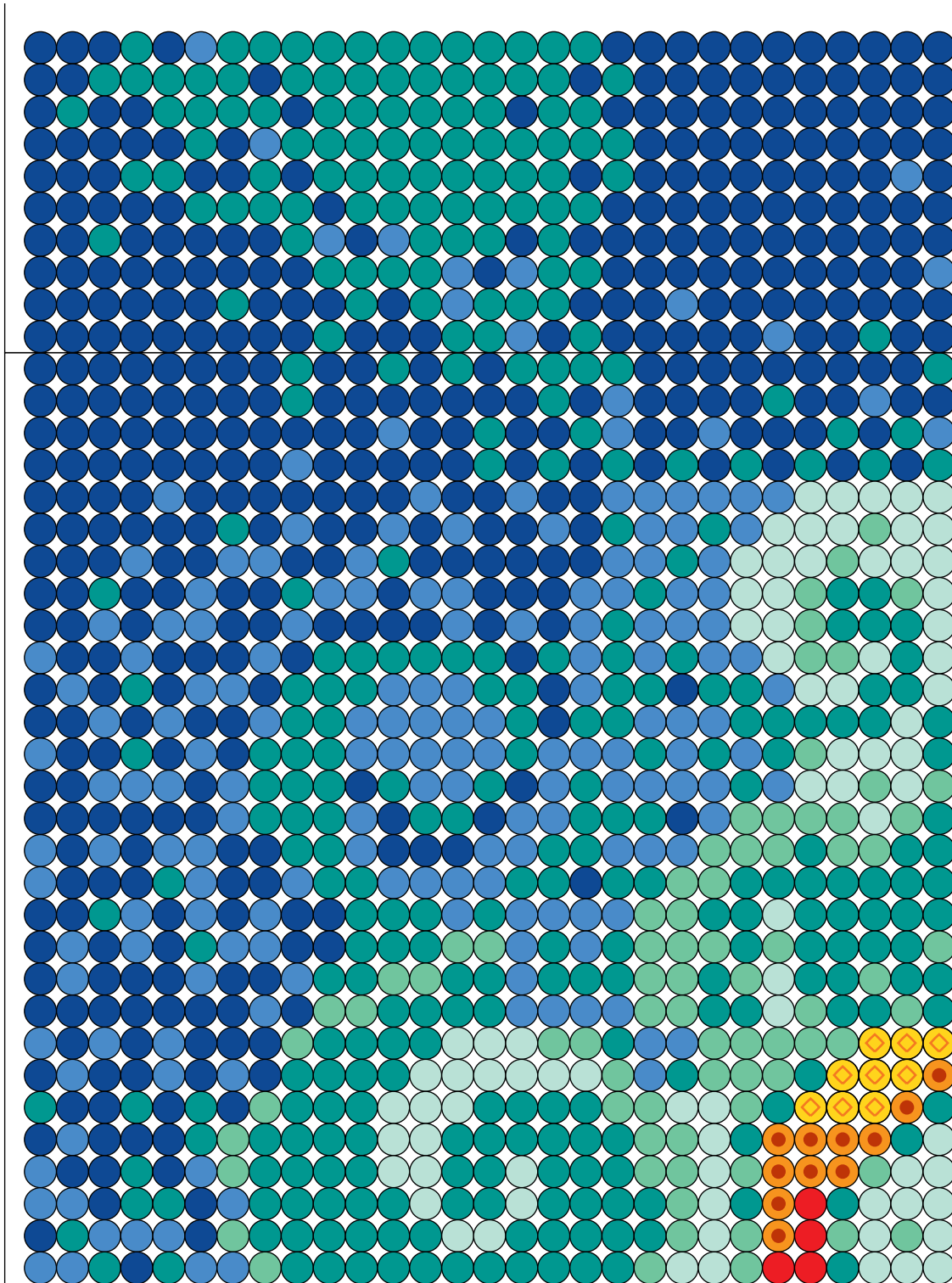
**Instructions**

**This project sheet is in two parts for quicker downloading. Please be sure to have both parts.**

1. For a large project like this, we recommend placing a large flat piece of heavy cardboard a little larger than the size of the project under the pegboards. You will want to fuse the design in your work area rather than transporting it to another space, and the cardboard will protect your work surface and help in turning the design over after fusing.
2. Assemble the pegboards 4 across and 6 down. Cut the patterns out and tape together as indicated at right. Place your beads on the pegboards as shown. If you are using clear pegboards, slide the actual-size pattern underneath them.
3. An adult should fuse the design—see page 11 for further instructions. Note: If you are going to mount your design for display as mentioned below, you might choose to fuse one side well and leave the other side unfused.
4. Optional assembly: Use a quick-drying adhesive to mount your design on a sturdy piece of mat board or foam core to display.

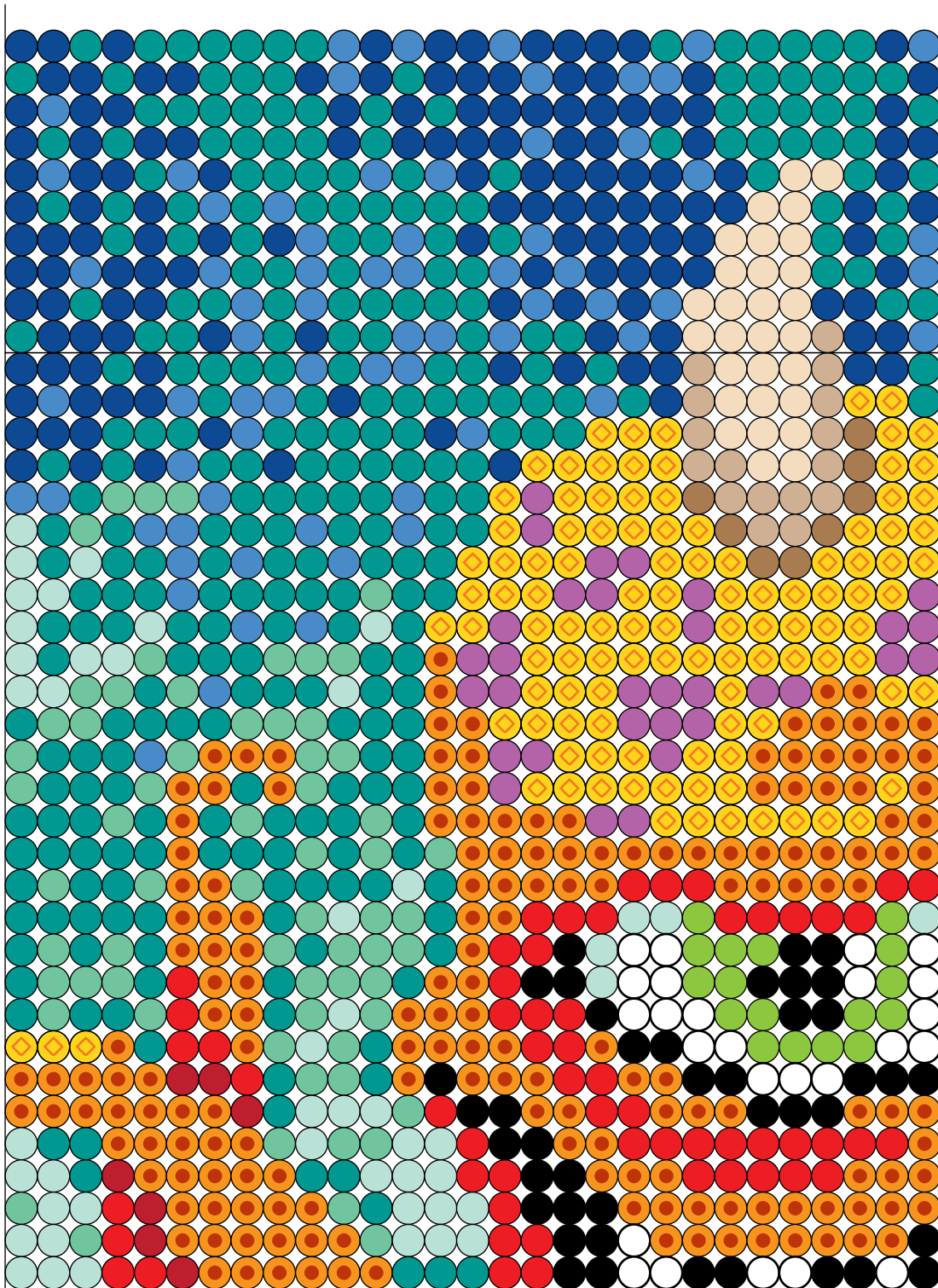


Pattern #1

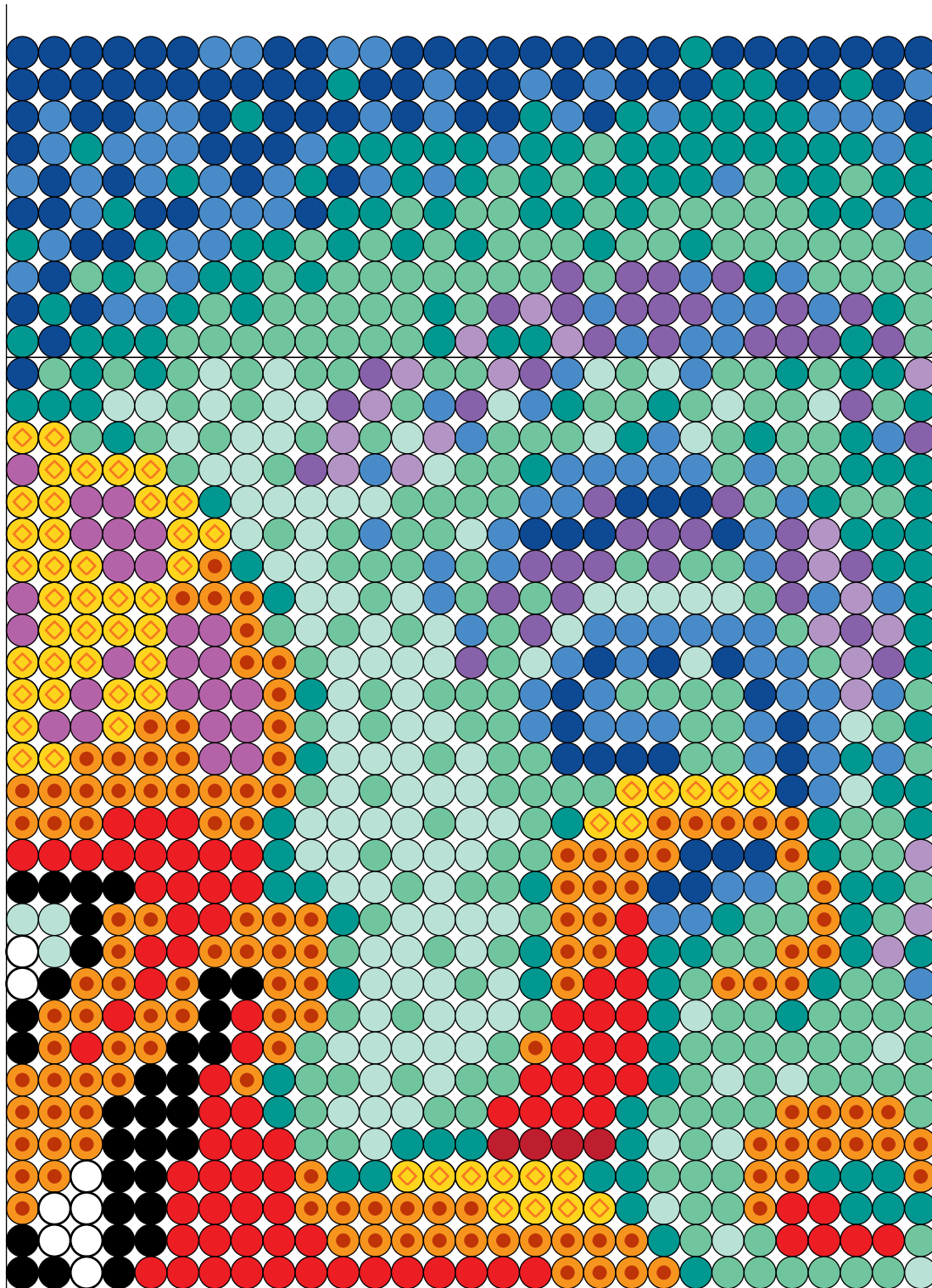




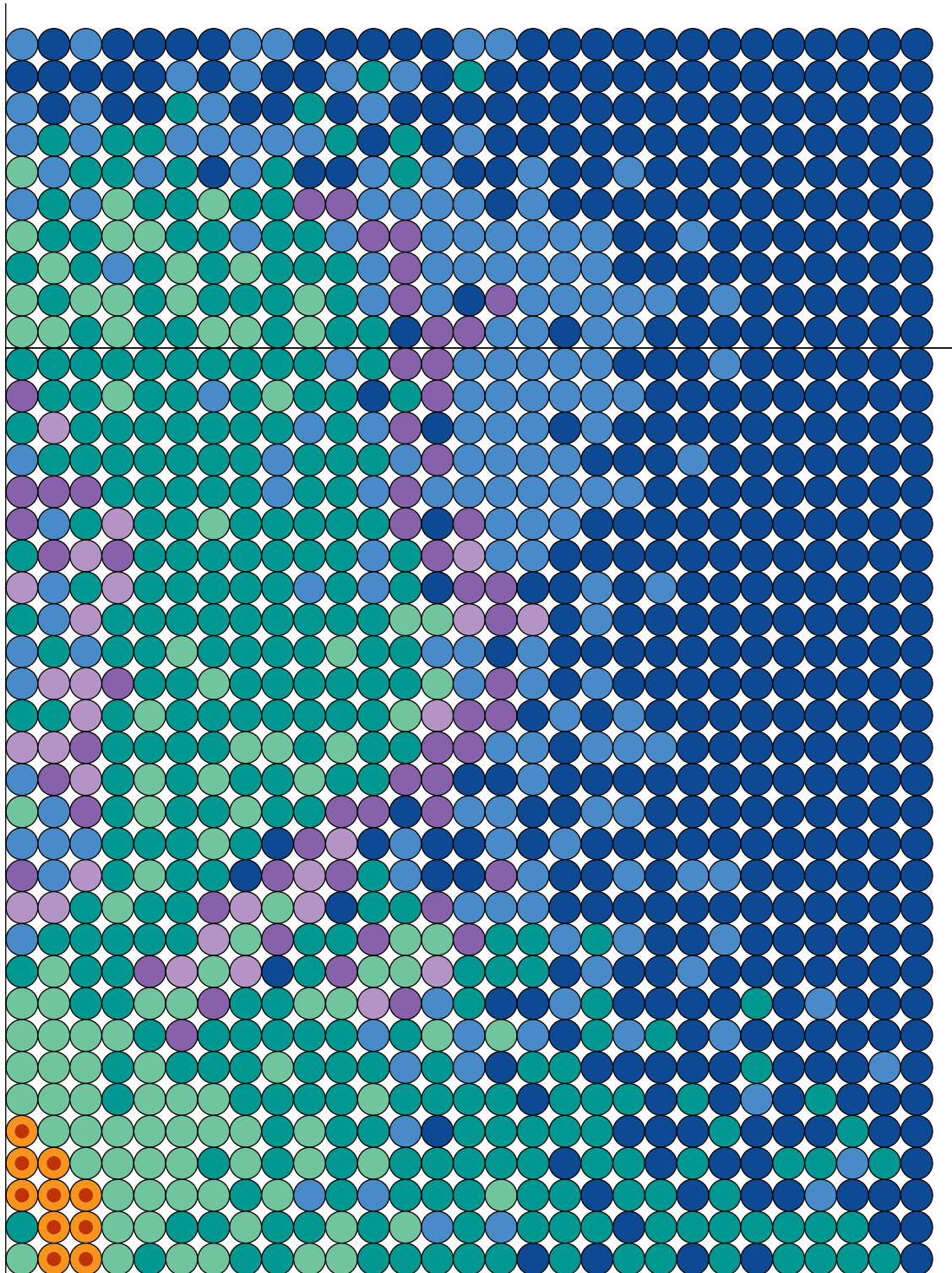
Pattern #2



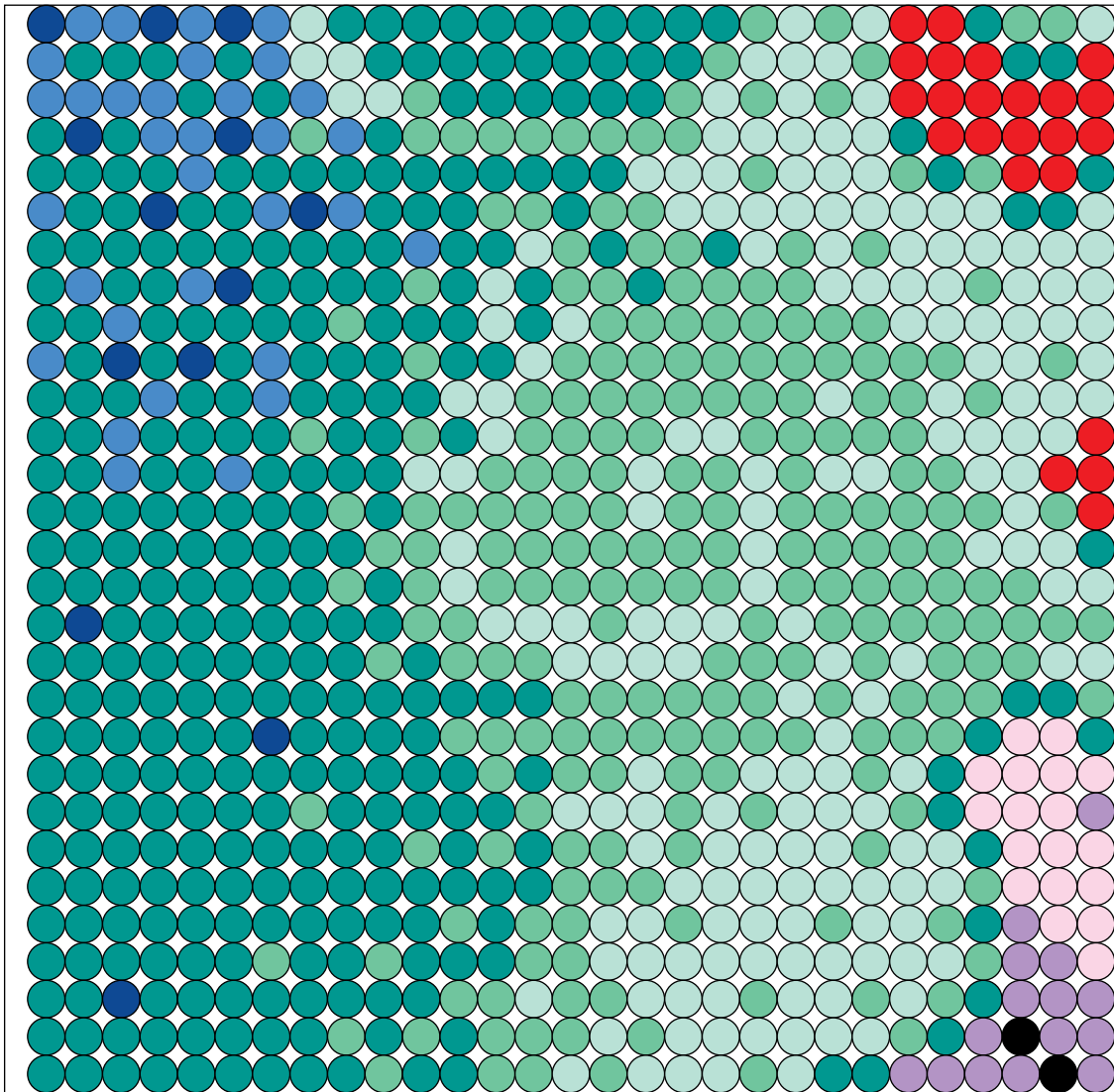
Pattern #3



Pattern #4

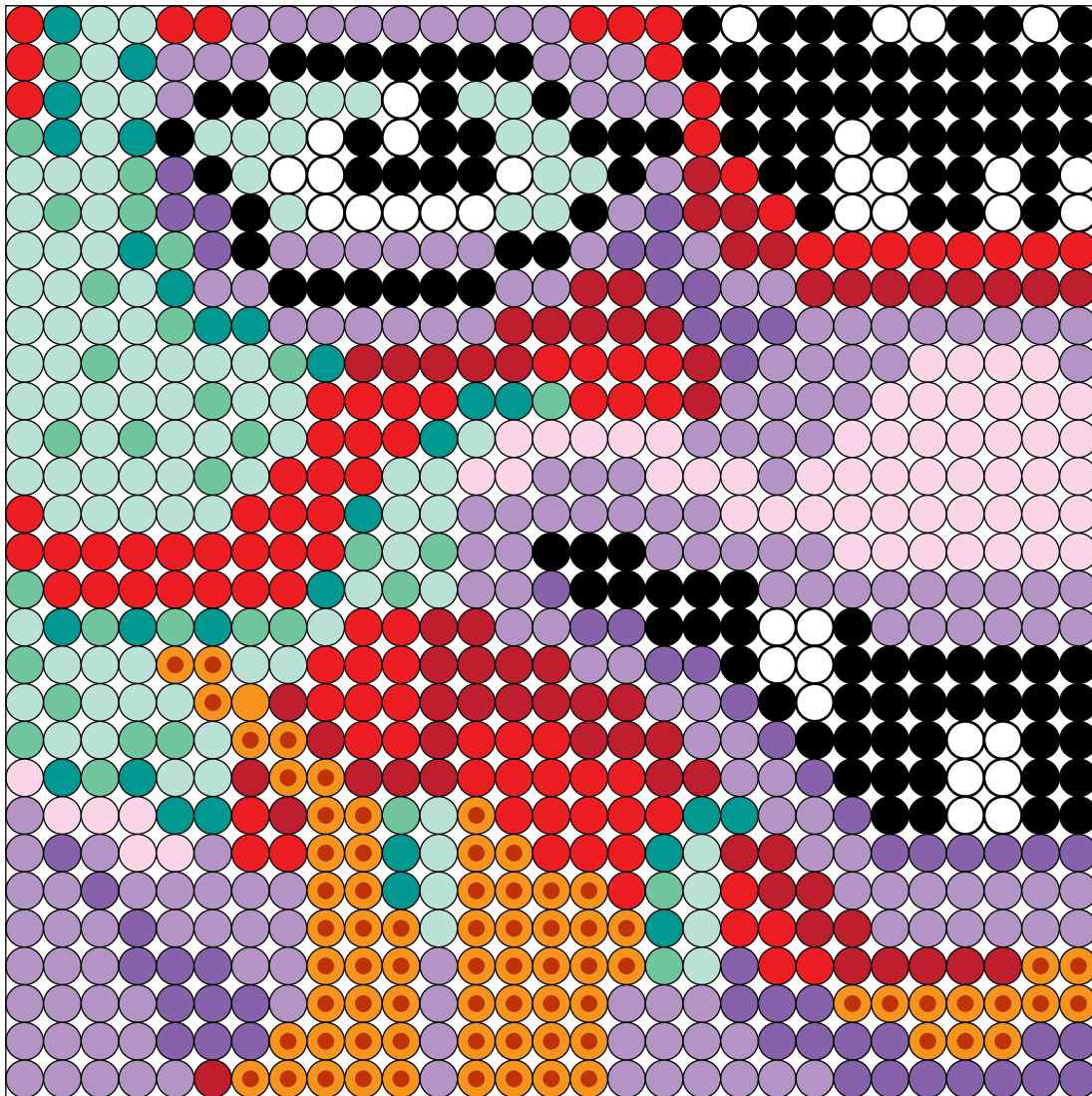


Pattern #5

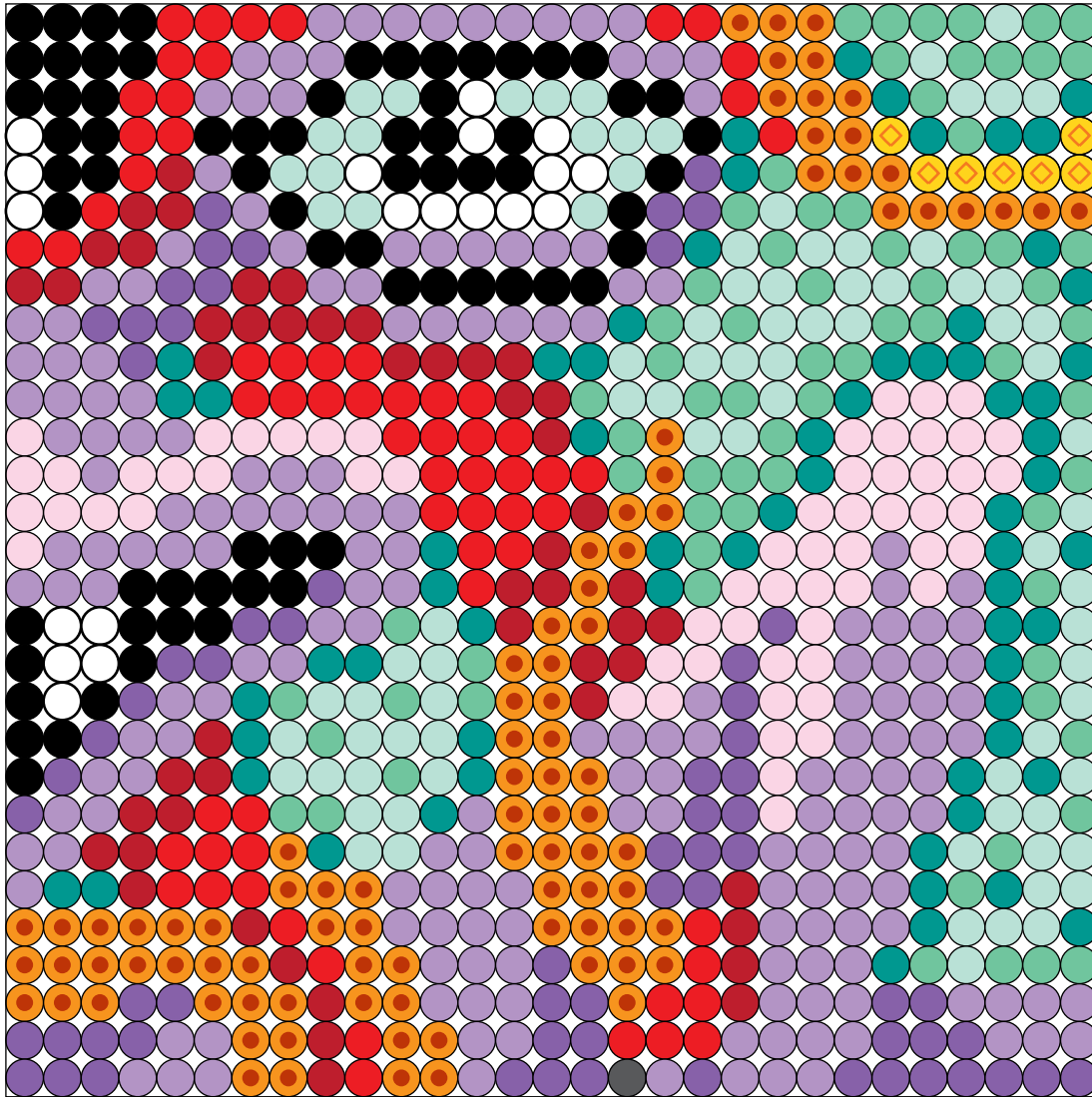




Pattern #6

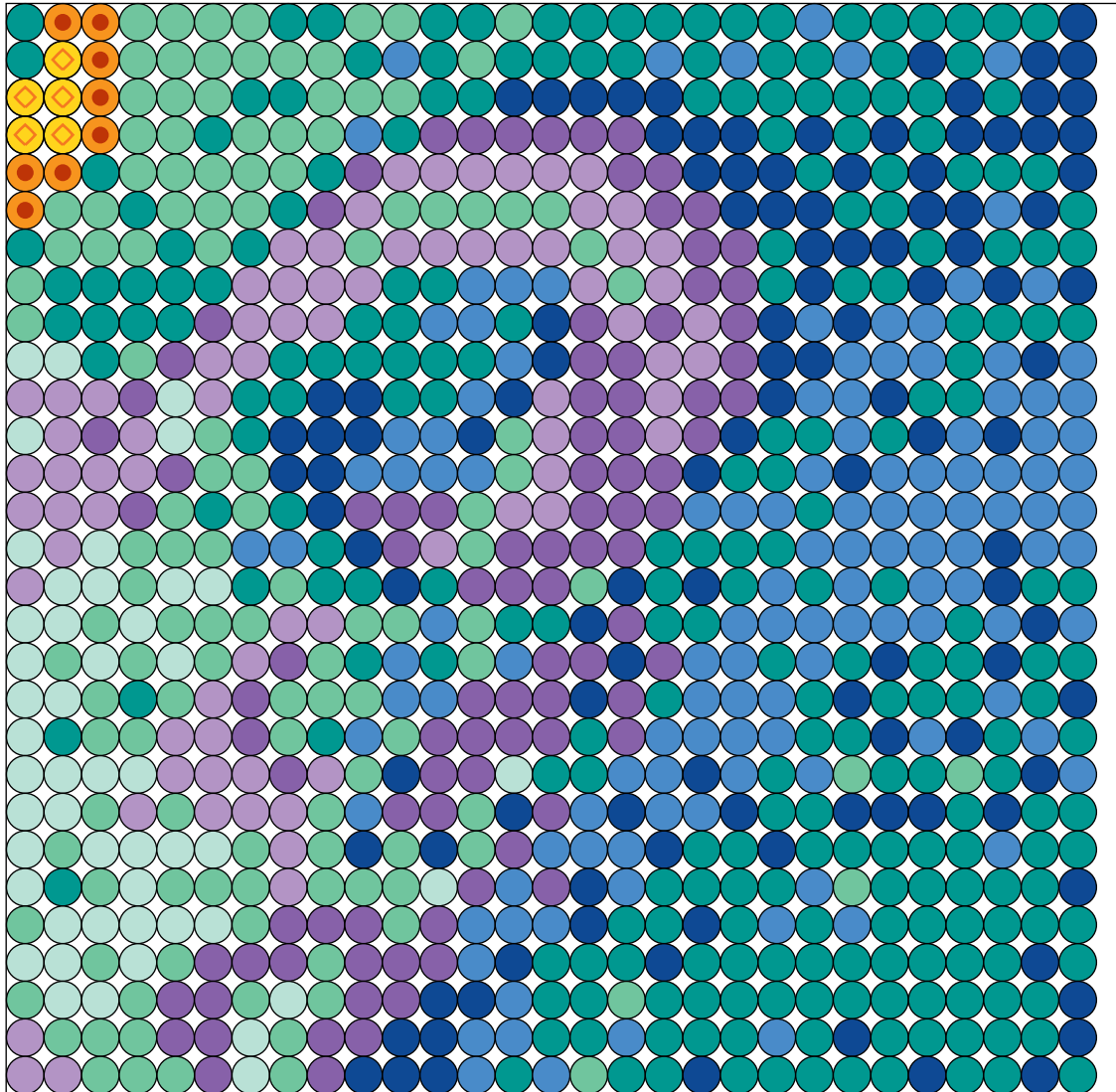


Pattern #7

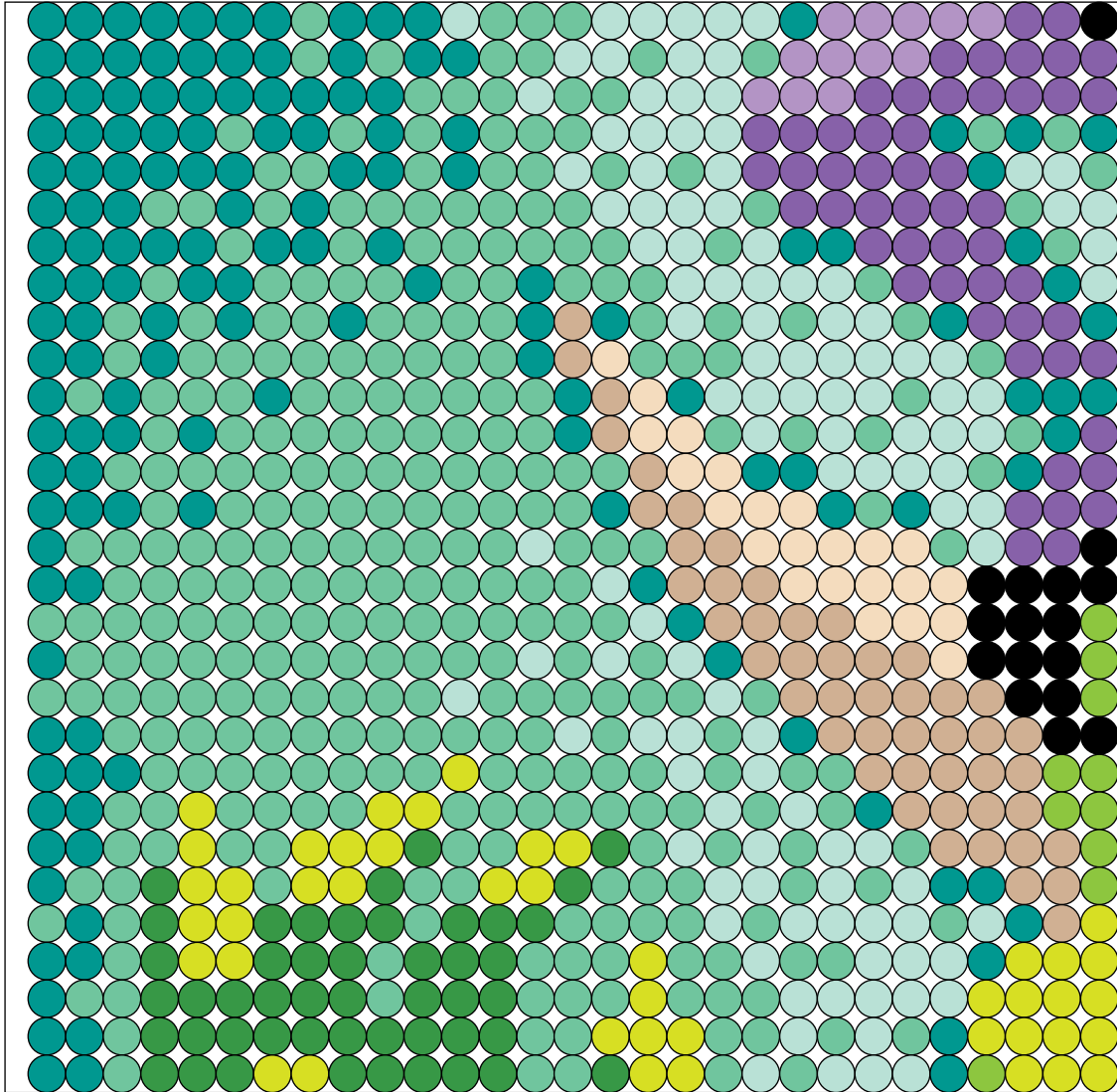




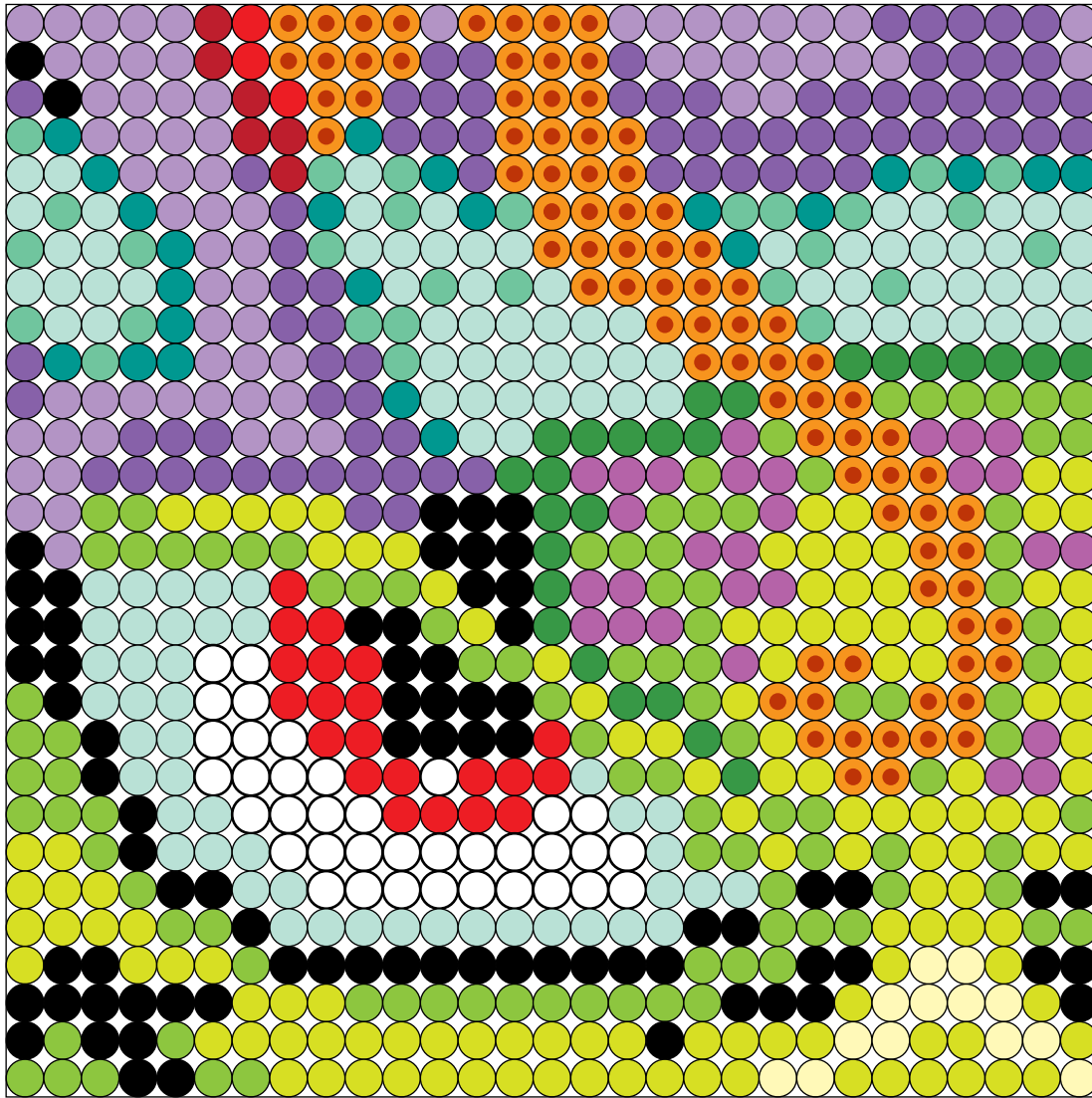
Pattern #8



Pattern #9



Pattern #10



Fusing Instructions—**Only Adults Iron**



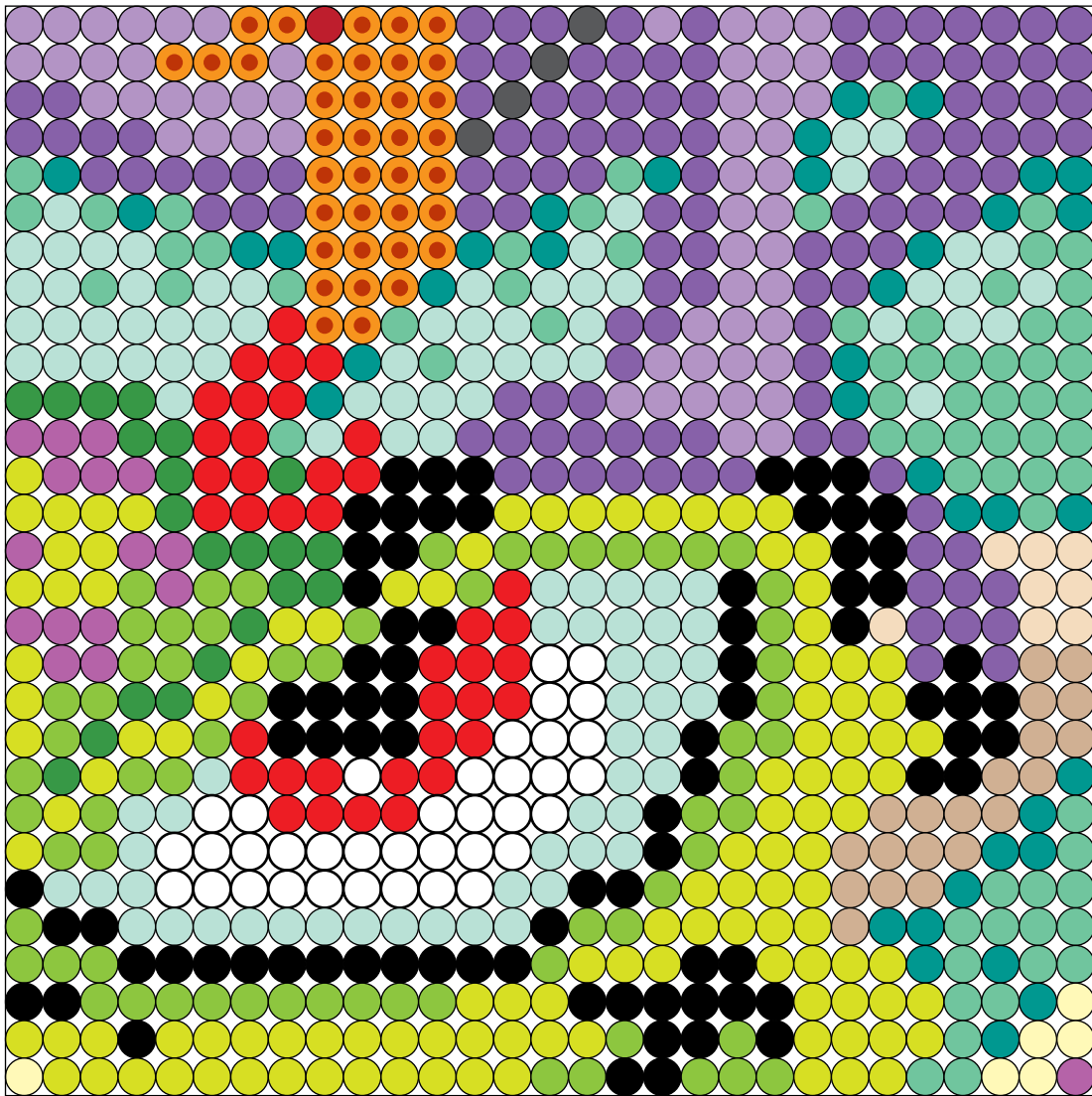
1. Be sure your design is on a flat, heat-safe surface.
2. Set a household iron to the medium setting. TIP: For a large project like this, you might find it helpful to protect the unfused sections with a flat piece of cardboard large enough to cover the entire design and weight it with a heavy book. This will help to prevent the beads from being knocked over accidentally as you work. As you fuse, carefully move the cardboard and weight to reveal more beads.

3. Place ironing paper over a section of the design at a time. In a circular motion, begin to iron the project. Do not press down with the iron. As the beads begin to fuse, you will see circles of the beads start to show through the paper. Lift the ironing paper occasionally to check the progress of the fusing. When ironed properly, the beads will still have an open center. Weight the design to prevent warping and let it cool.
4. Check to see that all the beads have fused, and re-fuse areas as needed. If you plan to mount the design onto cardboard for displaying, you might choose to fuse one side well, and leave the other side unfused as we did. If you prefer to fuse both sides, cover with the second piece of cardboard and carefully turn the design over to expose the non-fused side. Remove the pegboards and repeat step 3. Let cool completely.

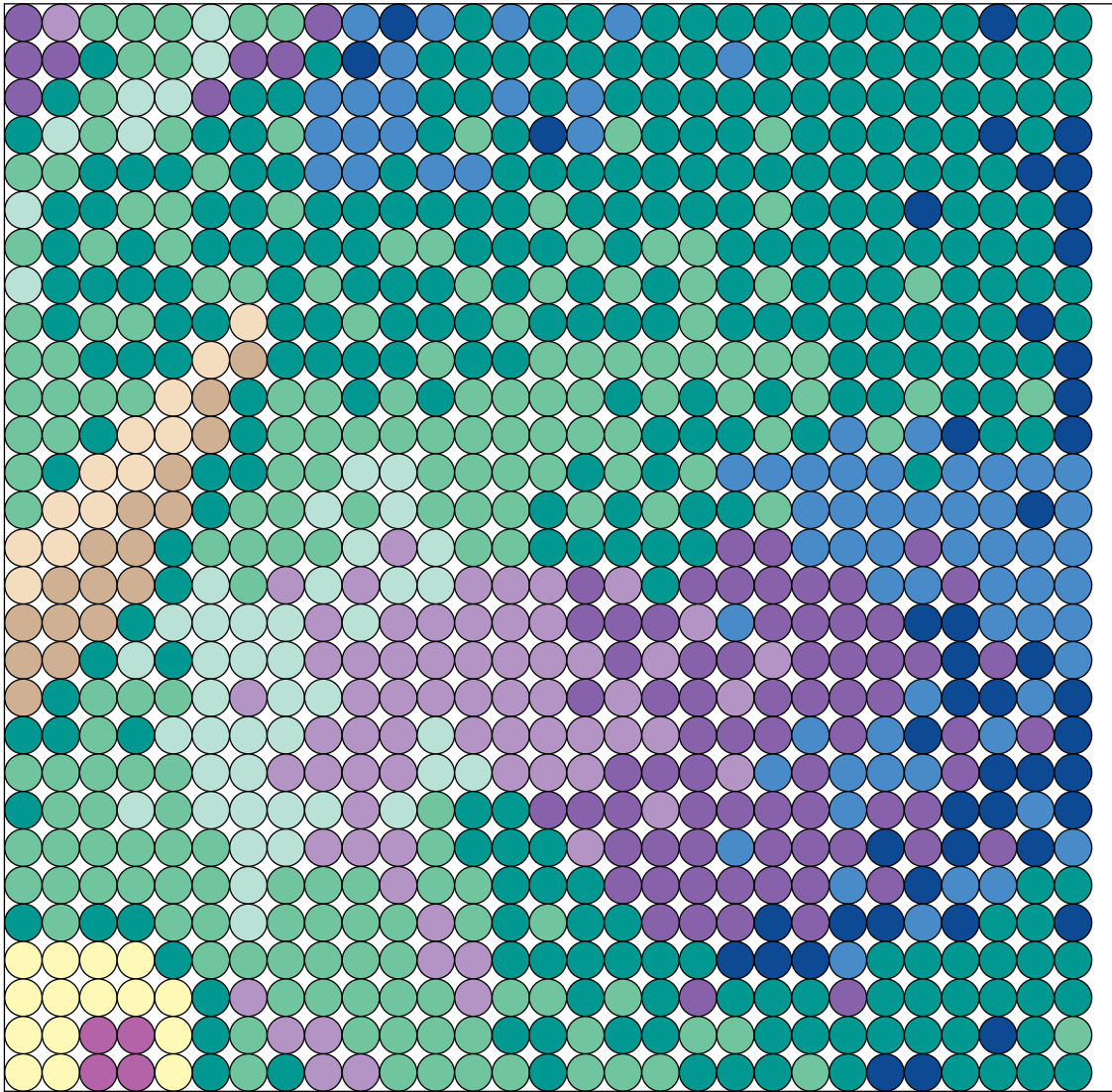
**NOTE:** Beads need heat for about 10-20 seconds to fuse evenly. Lift the paper occasionally to see how the beads are fusing. Additional heating time may be required.



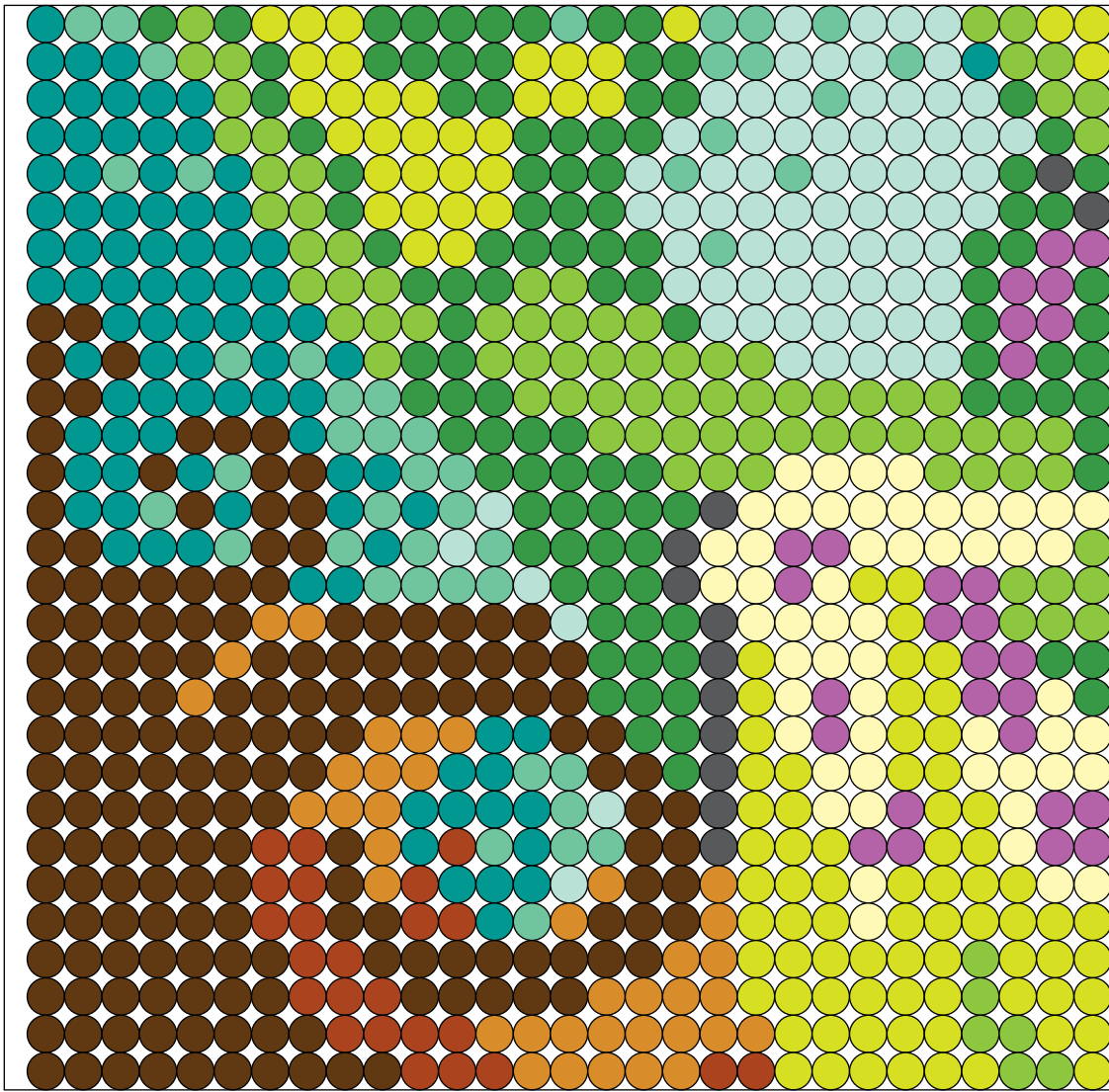
Pattern #11



Pattern #12

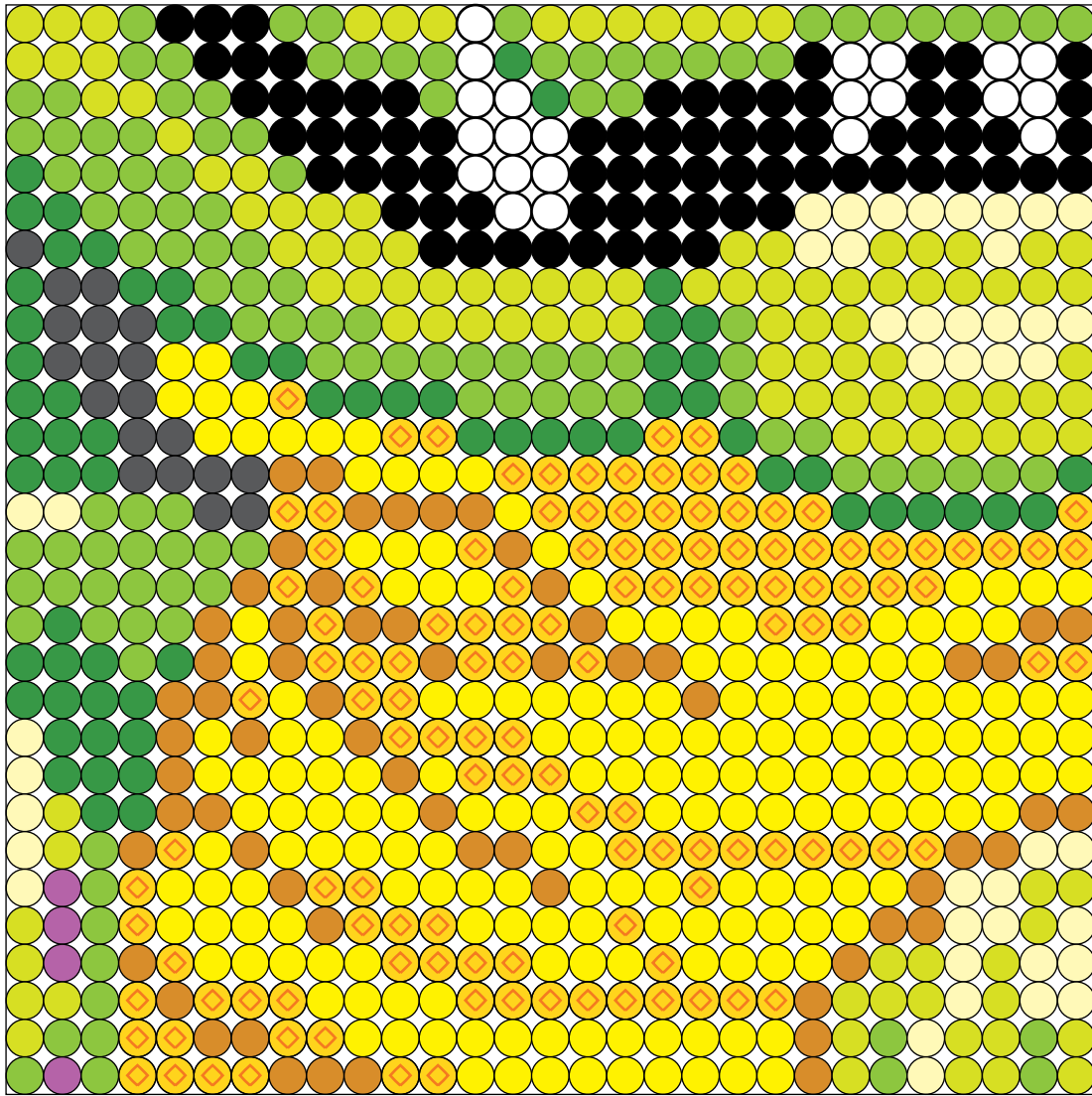


Pattern #13

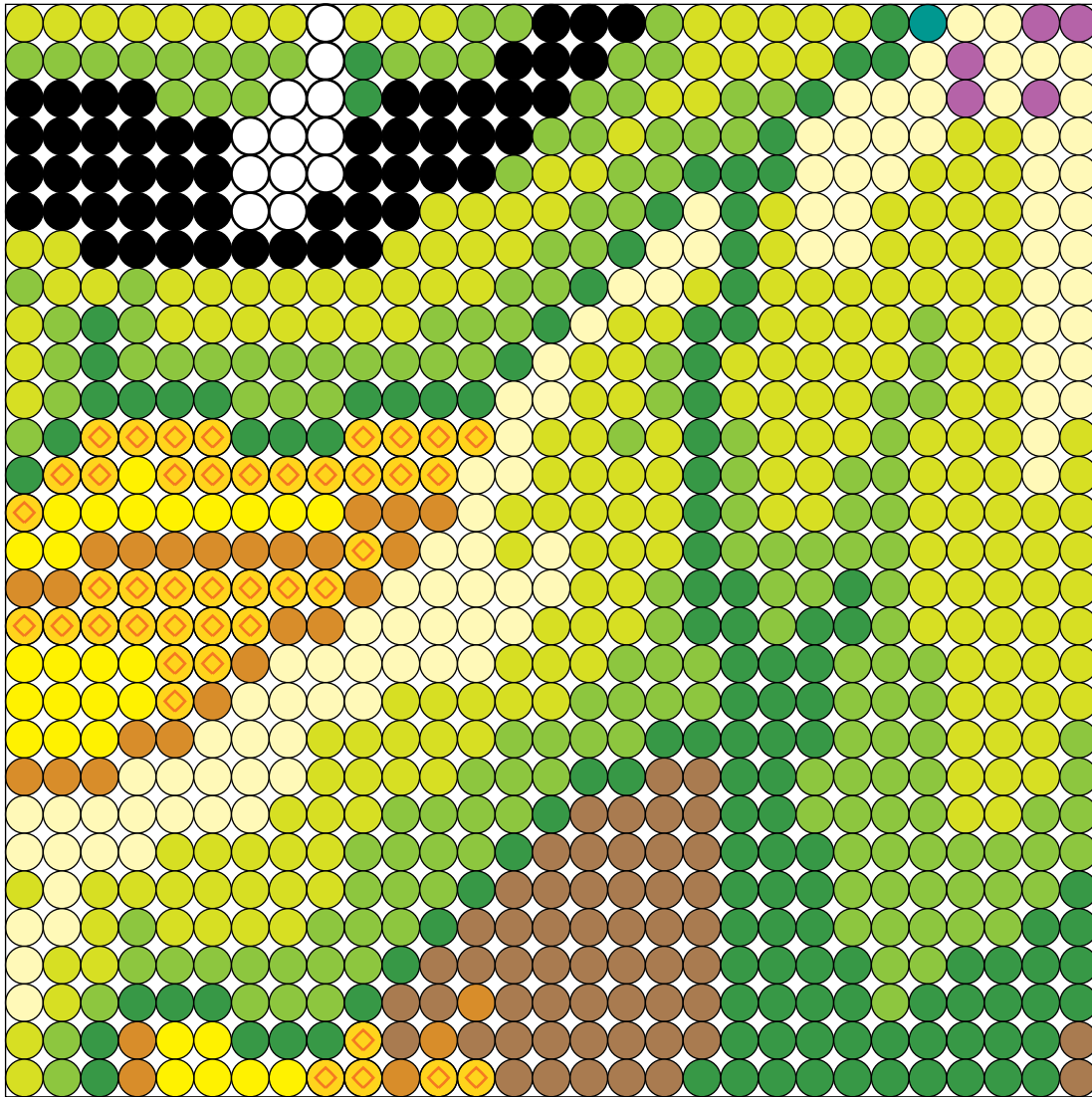




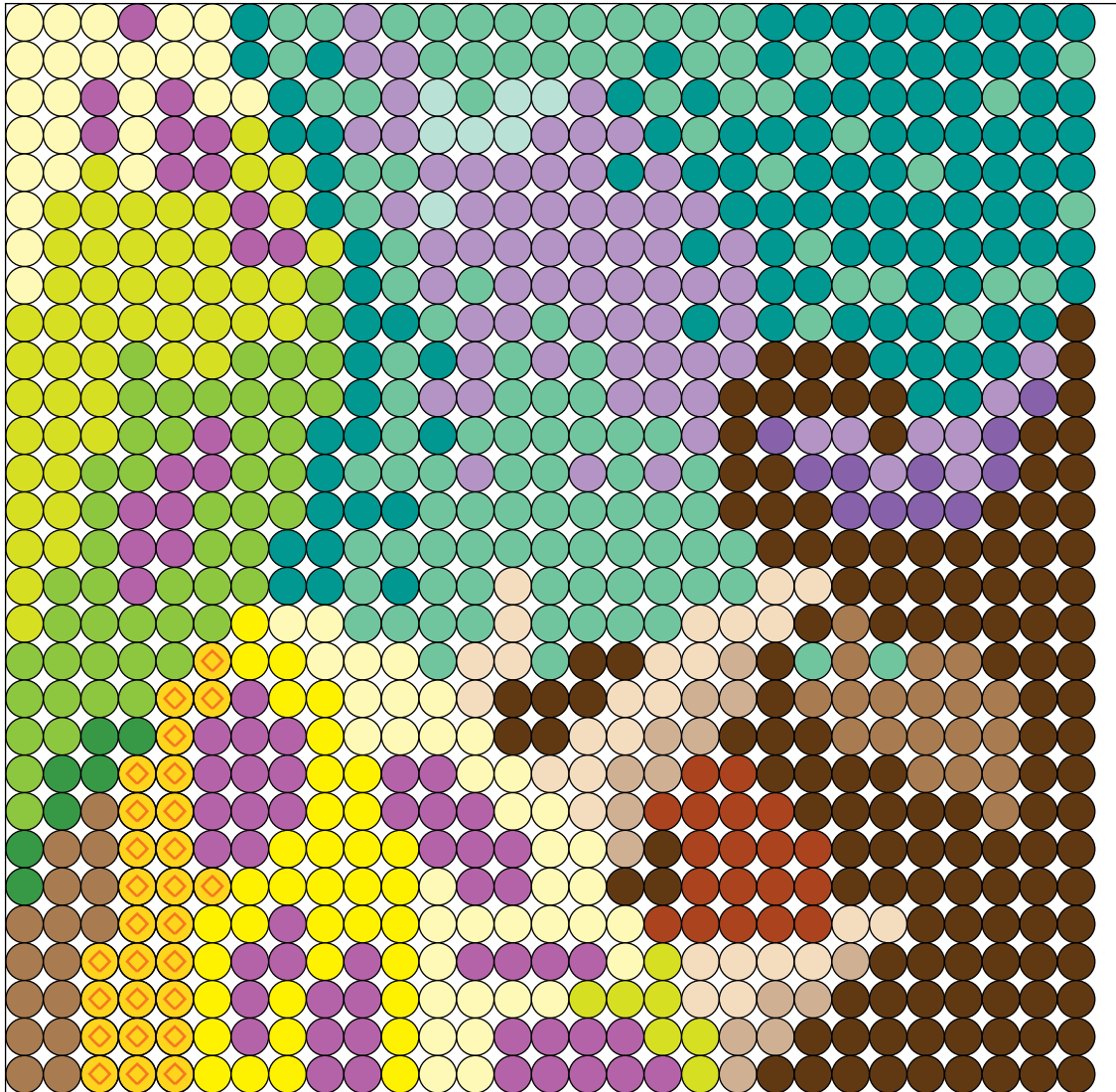
Pattern #14



Pattern #15

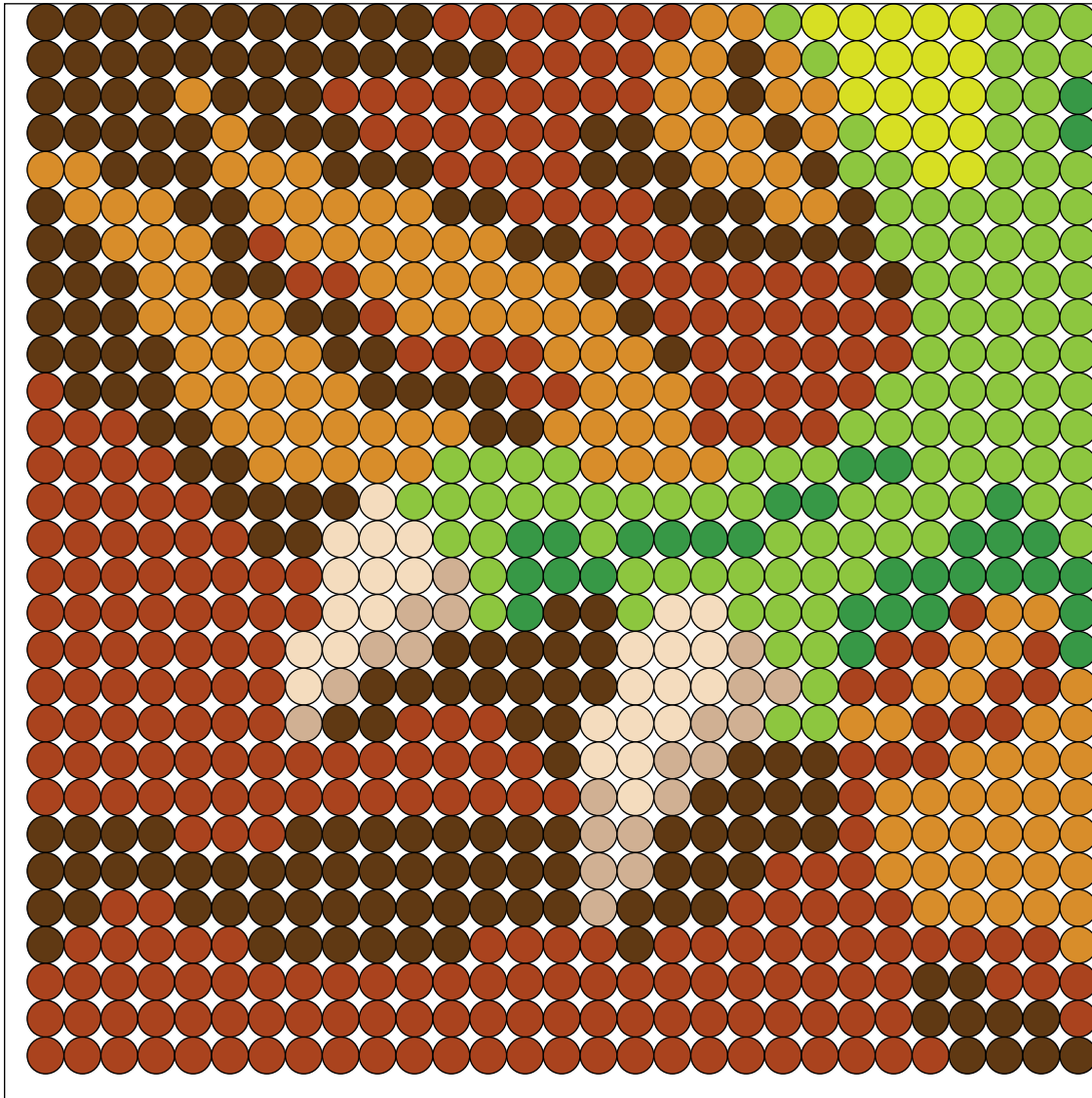


Pattern #16

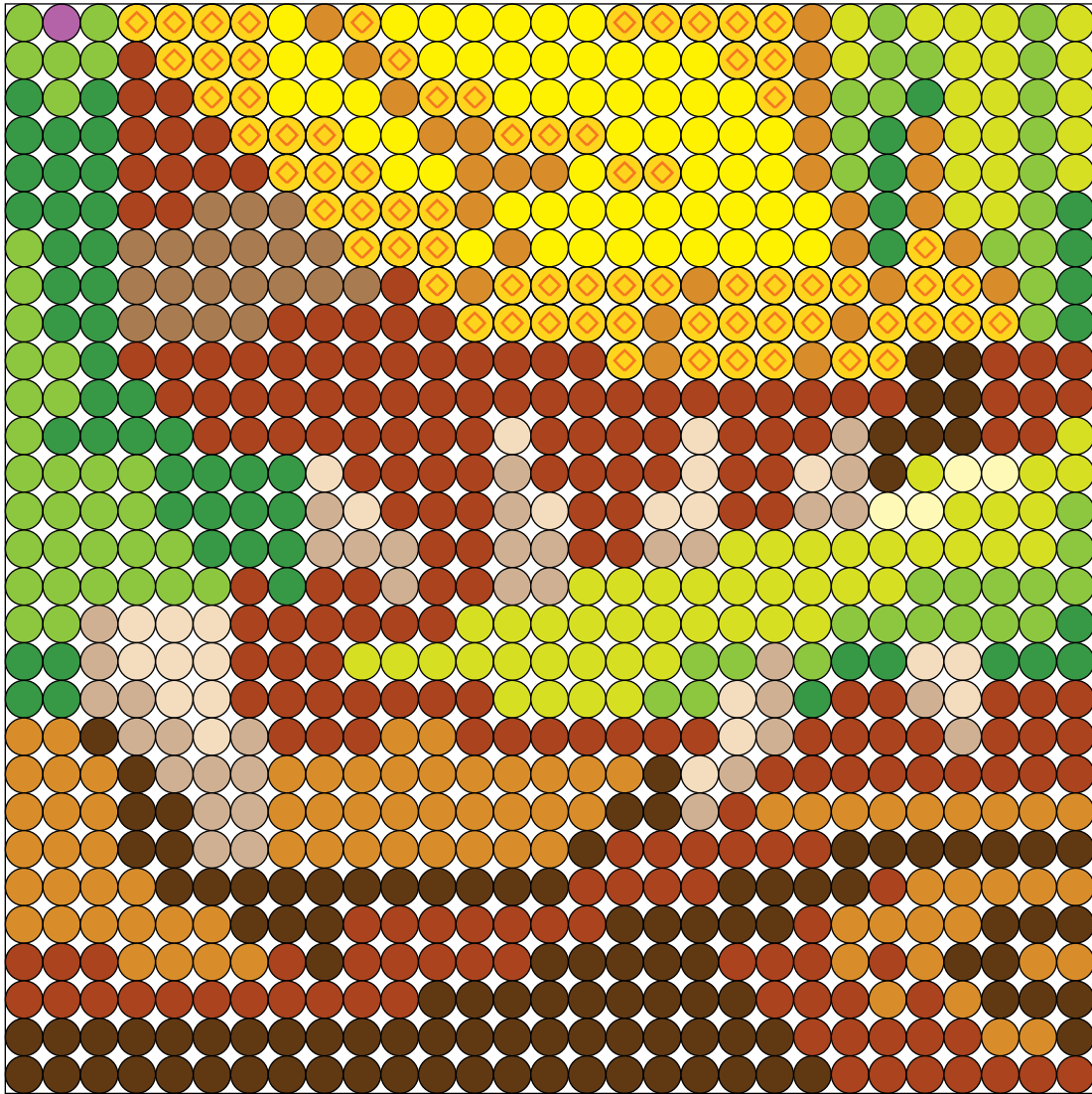




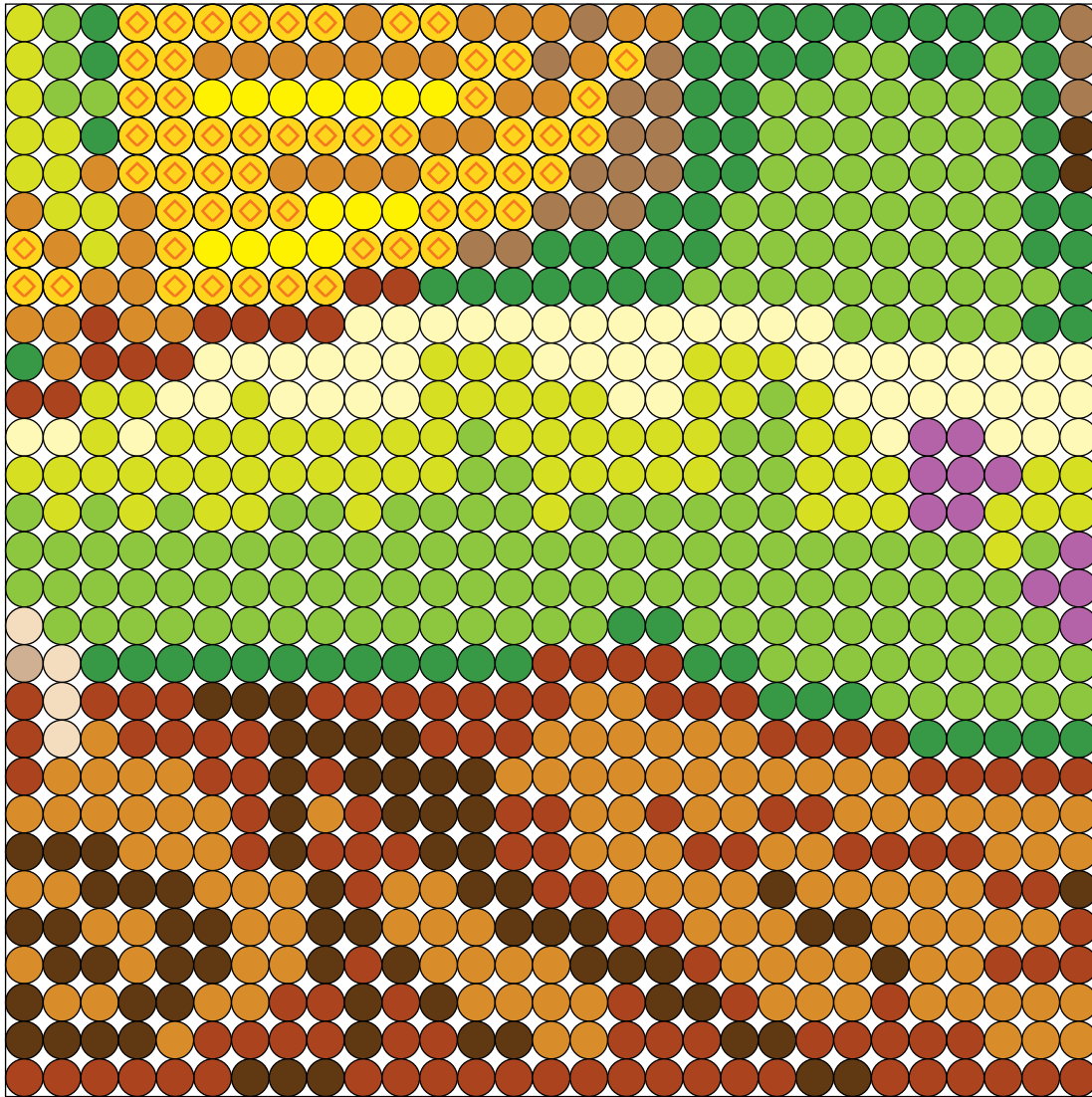
Pattern #17



Pattern #18



Pattern #19





Pattern #20

