

Polar Bear Winter Scene

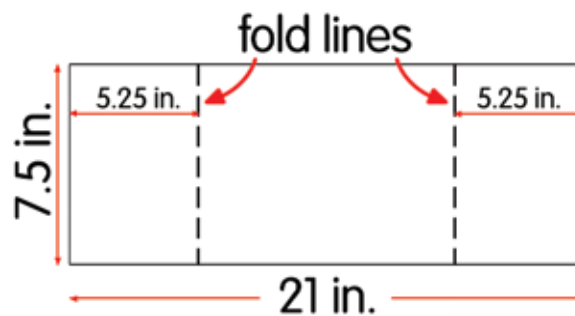
Project measures approx. 18" wide when assembled as shown.



NOTE: You will also need lightweight cardboard and craft glue to assemble this project. Artificial snow to decorate the scene is optional.

Scene Assembly

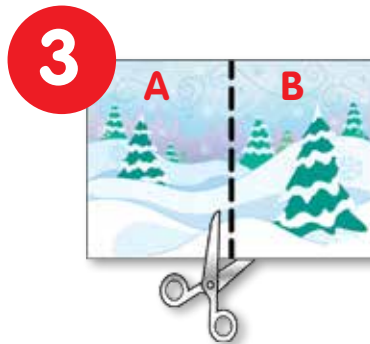
1



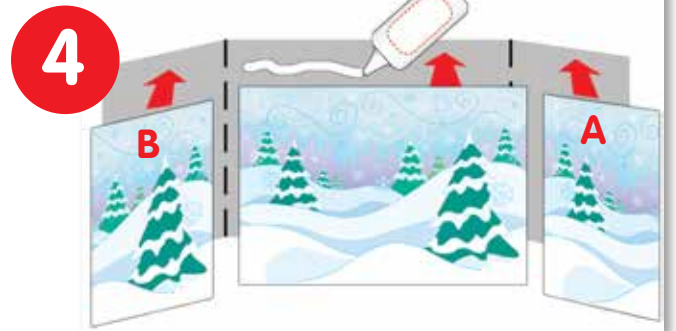
Cut and fold a piece of lightweight cardboard to the size shown at left.



Print and trim two copies of the background.



Cut ONE of the copies in half as shown. We'll call one A and one B.



Glue the full size print to the center panel of the cardboard, then glue A to the right panel and B to the left panel.

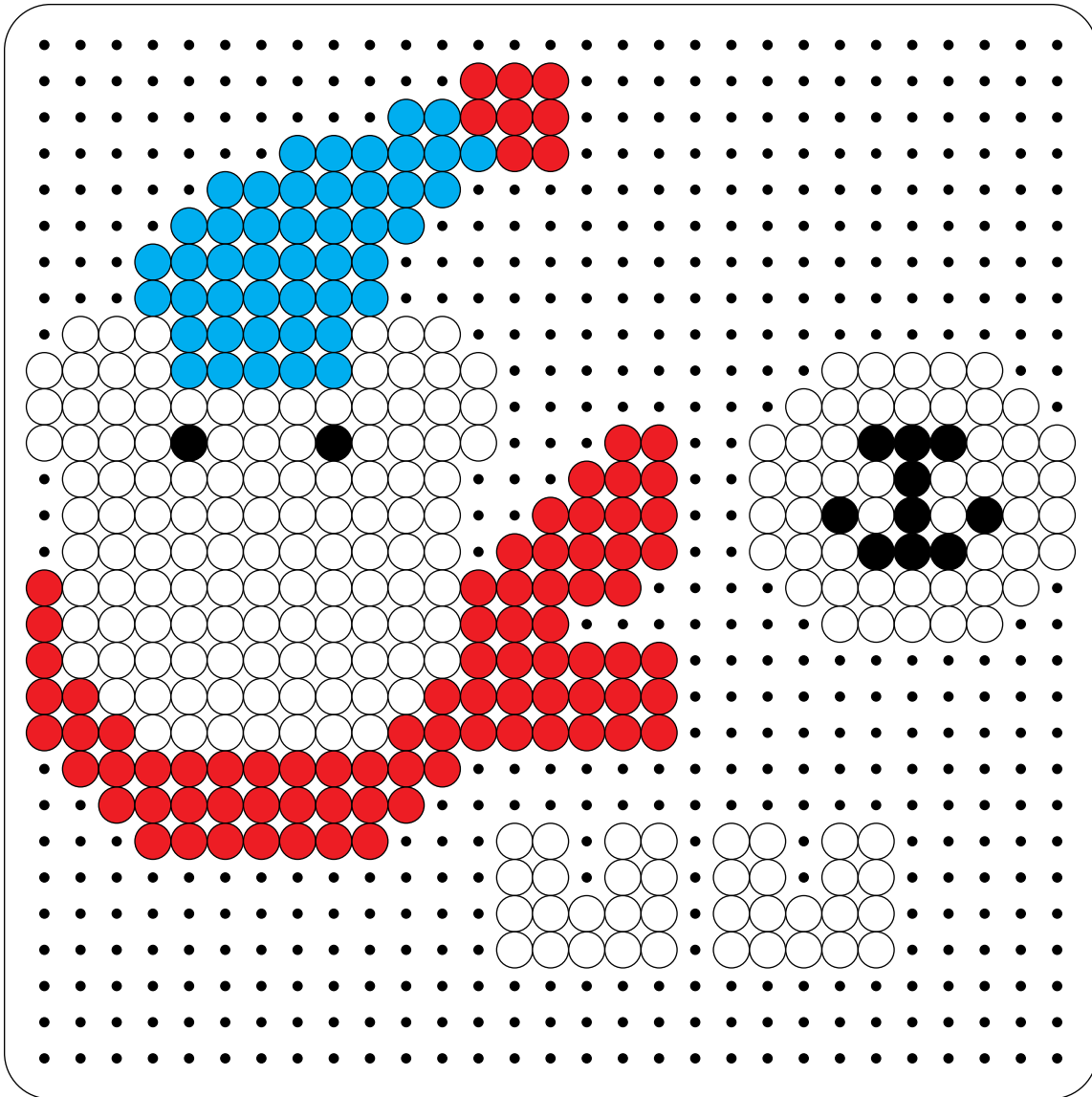
Instructions for Making the Polar Bears

1. Using the large square pegboard, place all the beads for your project.
2. Cover the completed design with the ironing paper. Keeping the iron level, gently iron the beads in a circular motion for about 10 seconds to fuse the beads evenly. Ironed properly, the beads will still have an open center. On a 3-D project such as this, DO NOT OVER-IRON the beads as it will make the centers of the beads close and can make assembly difficult.
3. Once the design is cool, peel off the ironing paper. Lift your design from the pegboard; flip the design over and repeat step #2. Your pegboard and ironing paper are reusable.

Continued on next page

Warning: Parents - the ironing must be done by an adult only. Some irons may emit steam. Please keep children at a safe distance.

Polar Bear #1 — Head, Muzzle, and Feet

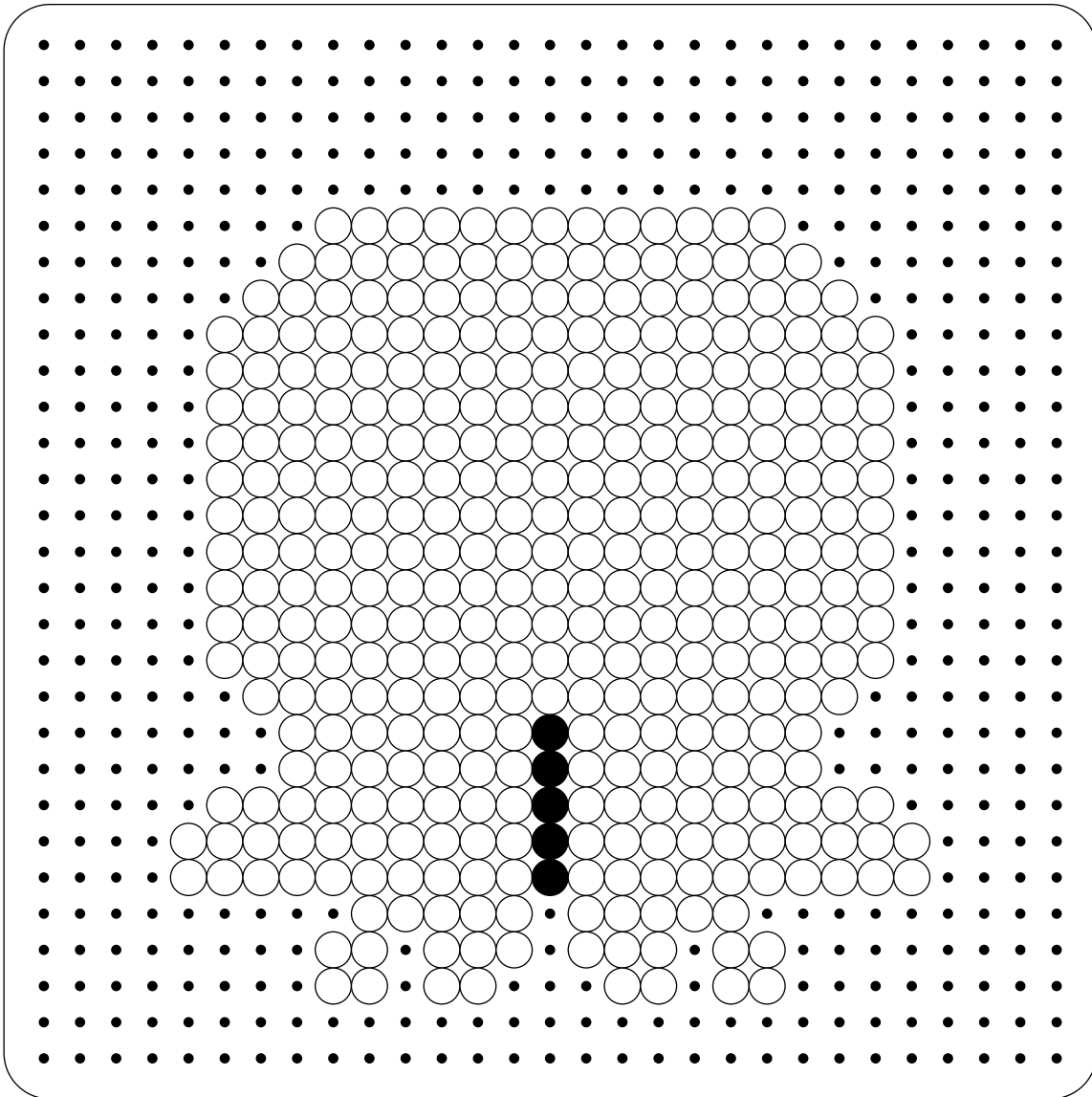


Bead Colors/Qtys Needed:

- Red - 86
- Light Blue - 46
- Black - 12
- White - 206

Continued on next page

Polar Bear #1 — Body



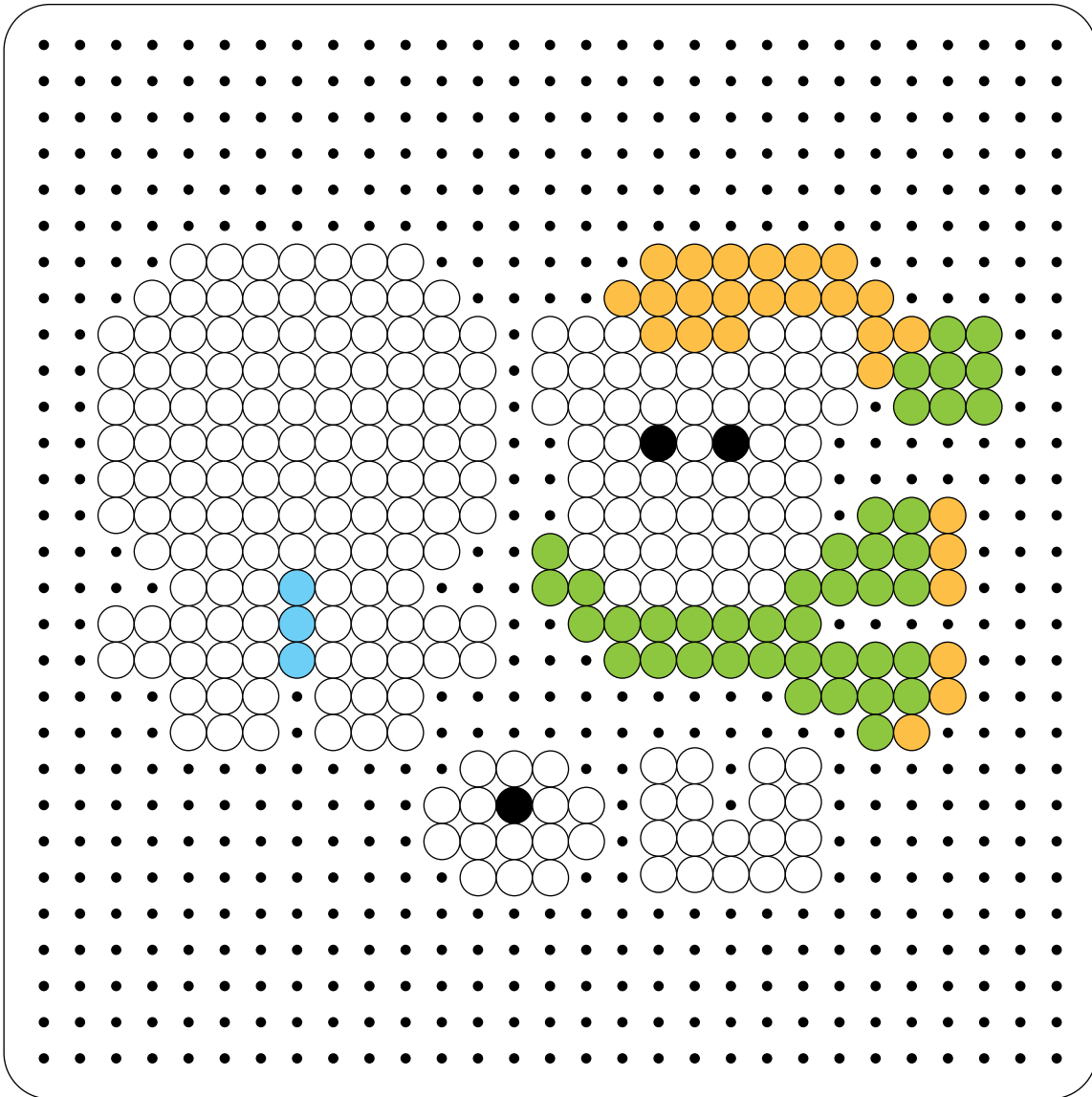
Bead Colors/Qtys Needed:

- Black - 5
- White - 366

Continued on next page

Warning: Parents - the ironing must be done by an adult only. Some irons may emit steam. Please keep children at a safe distance.

Polar Bear #2

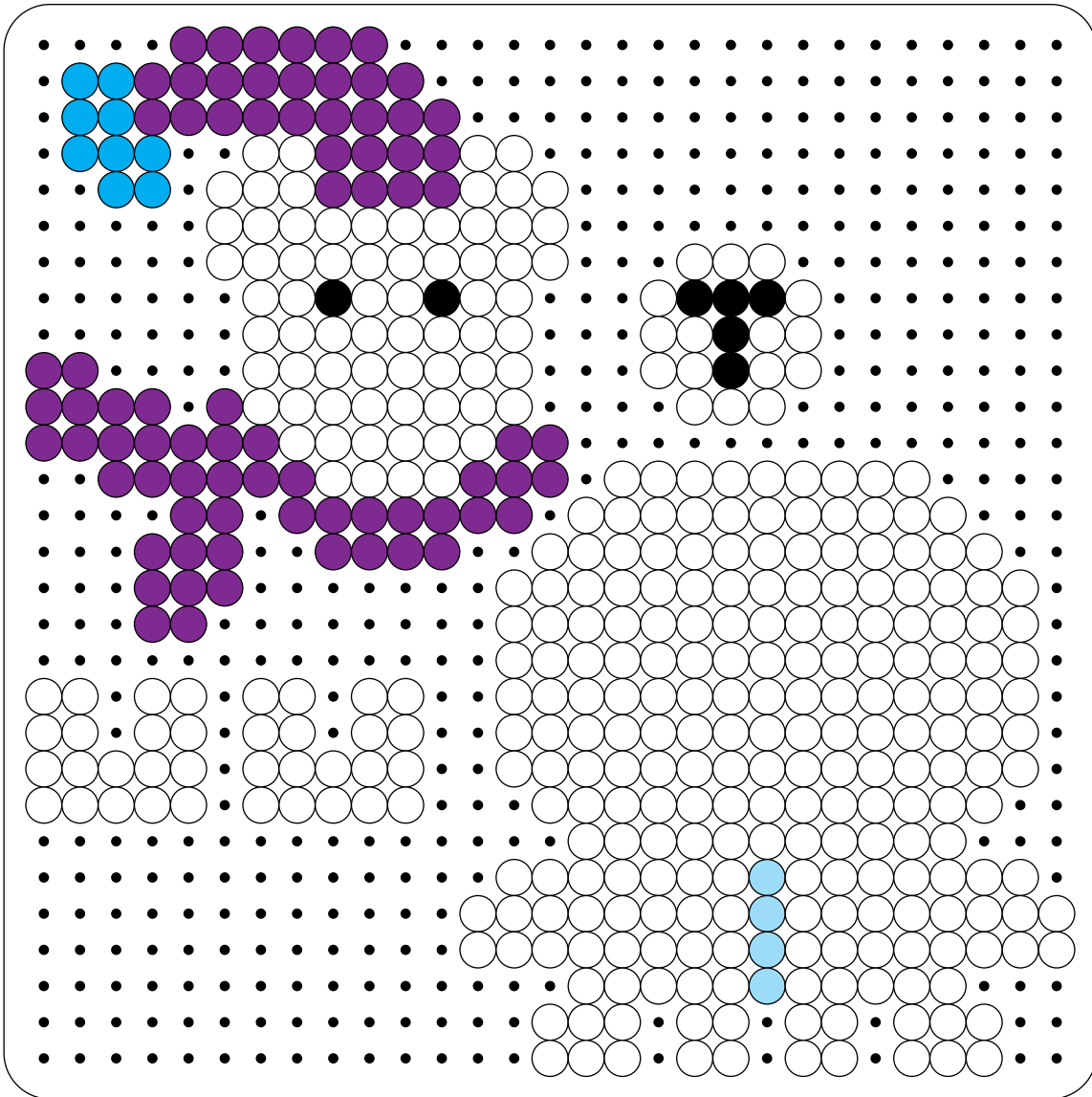


Bead Colors/Qtys Needed:

- Cheddar - 26
- Light Green - 41
- Pastel Blue - 3
- Black - 3
- White - 220

Continued on next page

Polar Bear #3



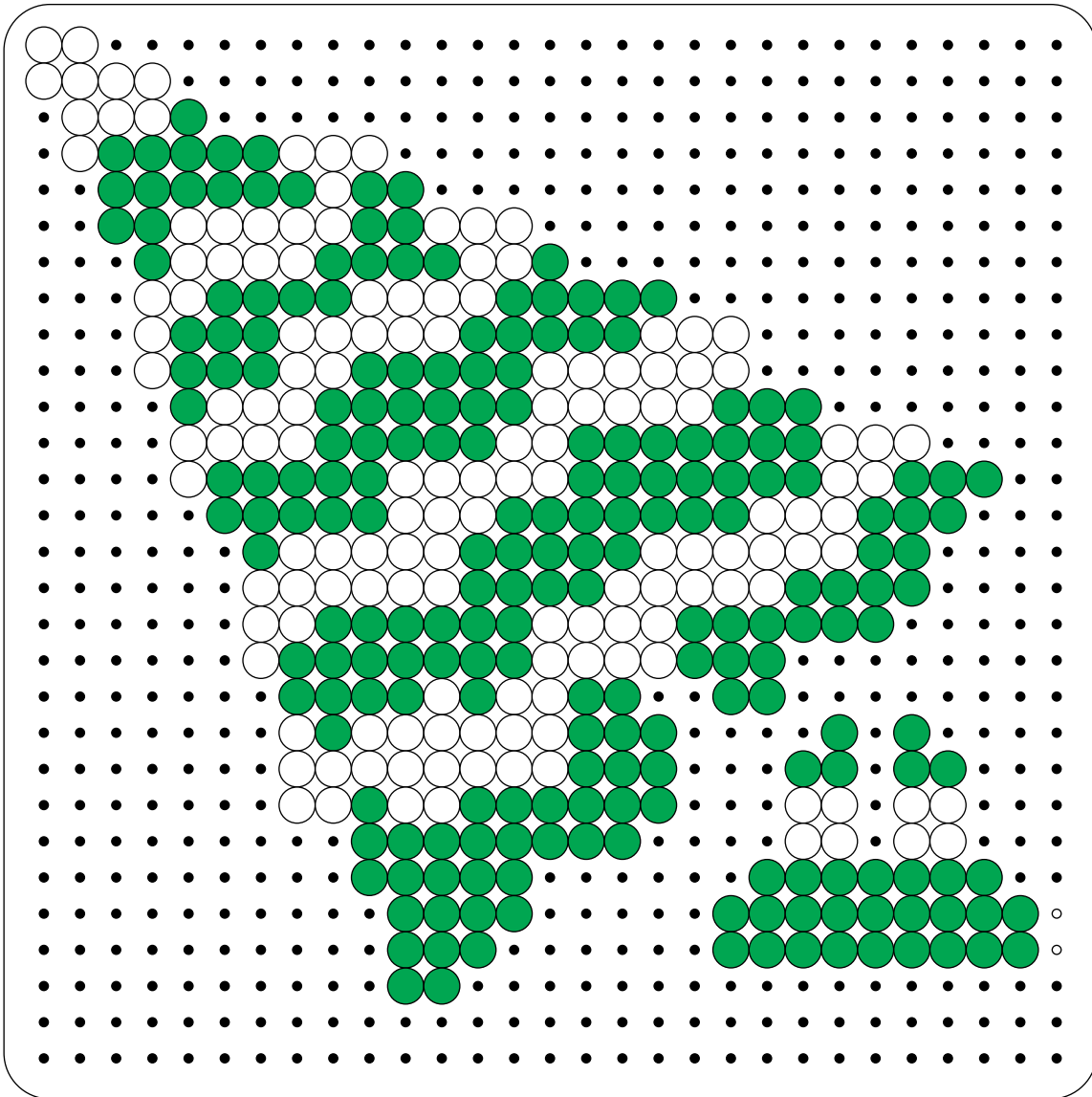
Bead Colors/Qtys Needed:

- Pastel Blue - 4
- Light Blue - 9
- Purple - 77
- Black - 7
- White - 345

Continued on next page

Warning: Parents - the ironing must be done by an adult only. Some irons may emit steam. Please keep children at a safe distance.

Tree



Bead Colors/Qtys Needed:

● Dark Green - 215

○ White - 146

Continued on next page

Warning: Parents - the ironing must be done by an adult only. Some irons may emit steam. Please keep children at a safe distance.

Assembly

For all of the polar bears, the assembly is similar:

- 1-Glue the muzzle to the head
- 2-Glue the head to the body

To add the feet for the polar bears and the tree, turn the feet at right angles to the body, align the slots, and slide together.

To complete the entire scene, add some artificial snow to the table top, place the winter scene background, and finally, position the polar bears and tree.

