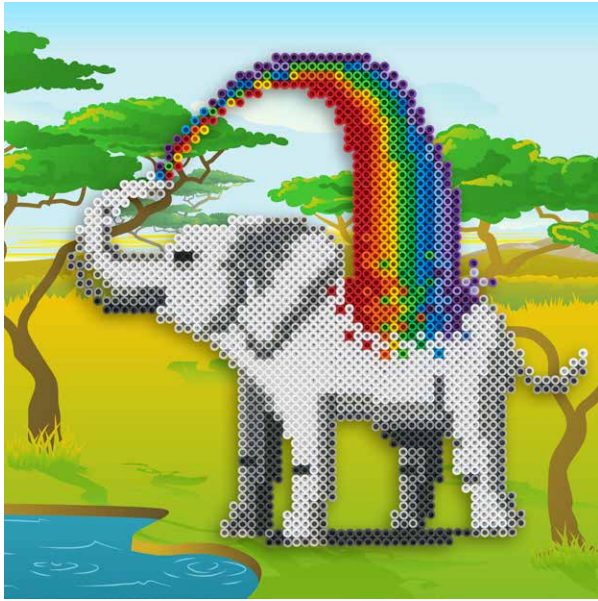


Rainbow Elephant



YOU WILL NEED:

Pegboards:

4 large square

Other:

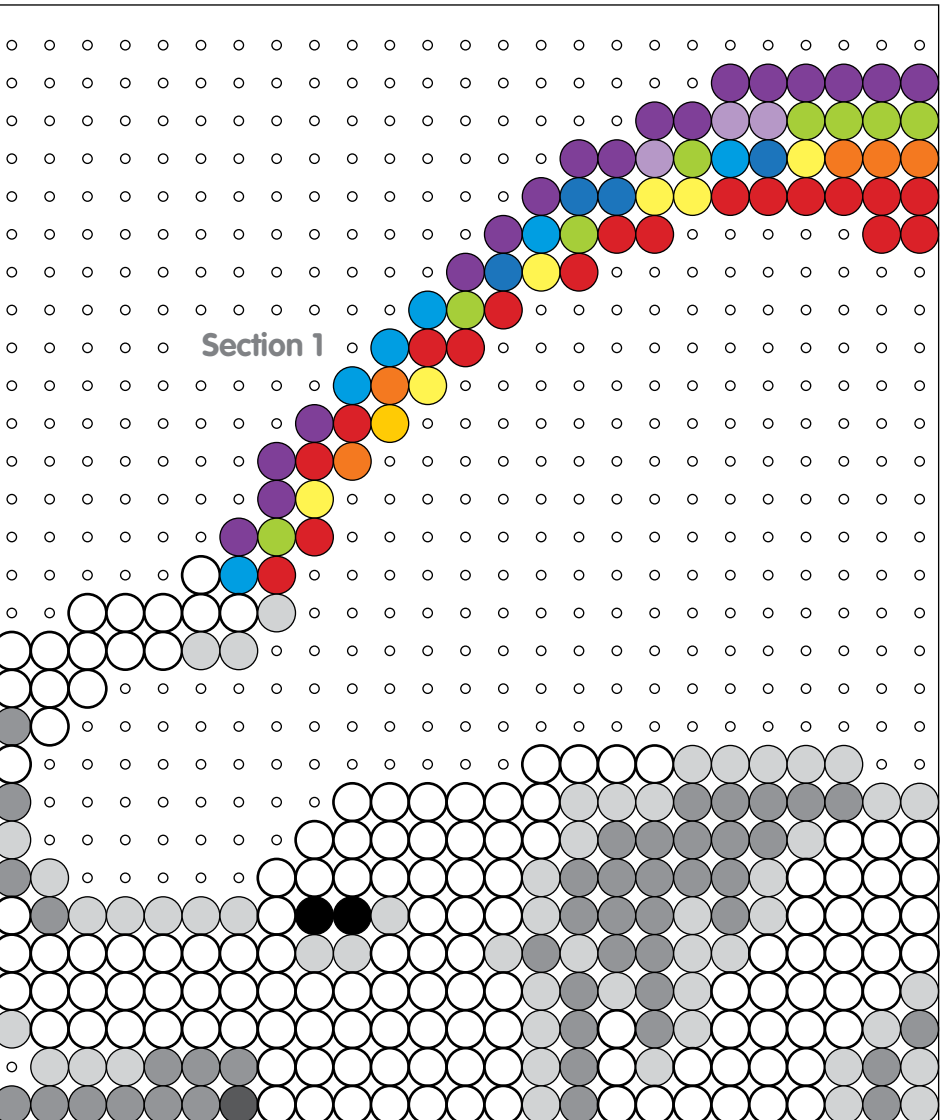
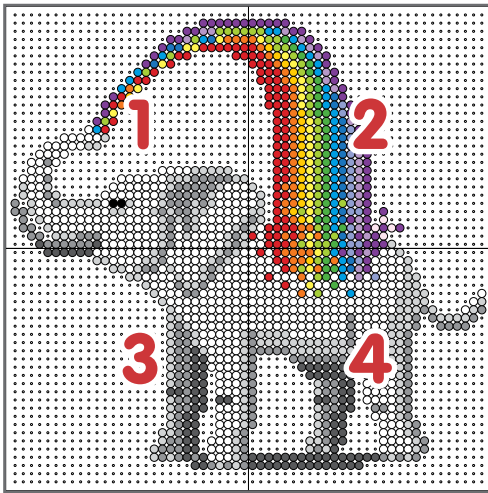
Iron and ironing paper
Scissors and clear tape
Tweezers
Two 14" x 14" pieces of sturdy cardboard
Masking tape (optional)

Bead Colors:

● Red - 82	● Blueberry Cream - 21
● Orange - 47	● Pastel Lavender - 25
● Cheddar - 21	● Purple - 62
● Yellow - 31	● Light Grey - 218
● Kiwi Lime - 46	● Grey - 177
● Green - 34	● Dark Grey - 103
● Turquoise - 37	● Black - 2
● Light Blue - 21	● White - 490
	● Clear - 4

Instructions

1. Assemble 4 large square pegboards as shown to create your project, placing them on one of the large pieces of cardboard on a heat-safe surface that you can later use for fusing. Cut out and tape together the pattern sections. If you are using clear pegboards, slide the actual-size pattern underneath them. Place your beads following the pattern.

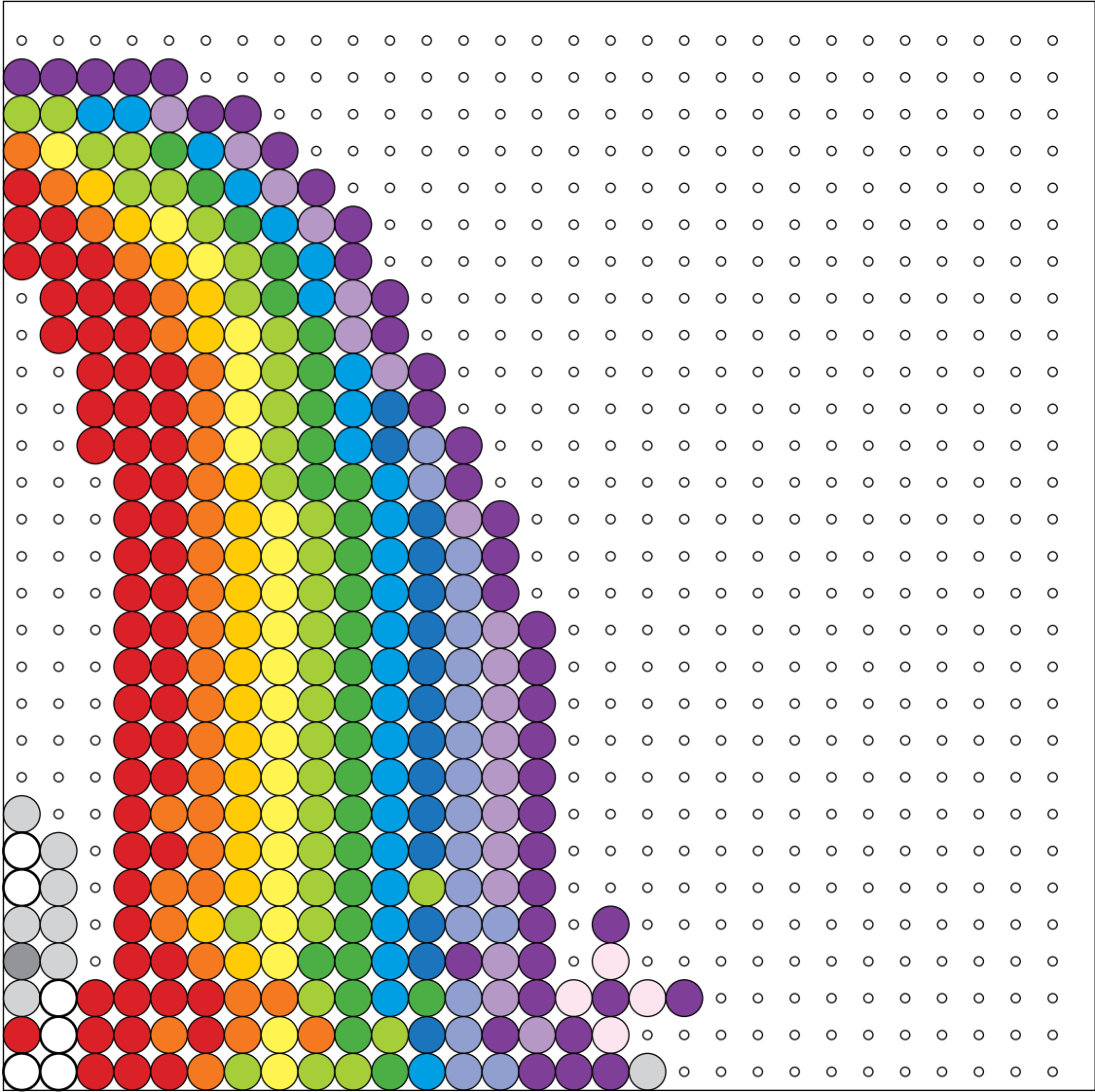


Section 1

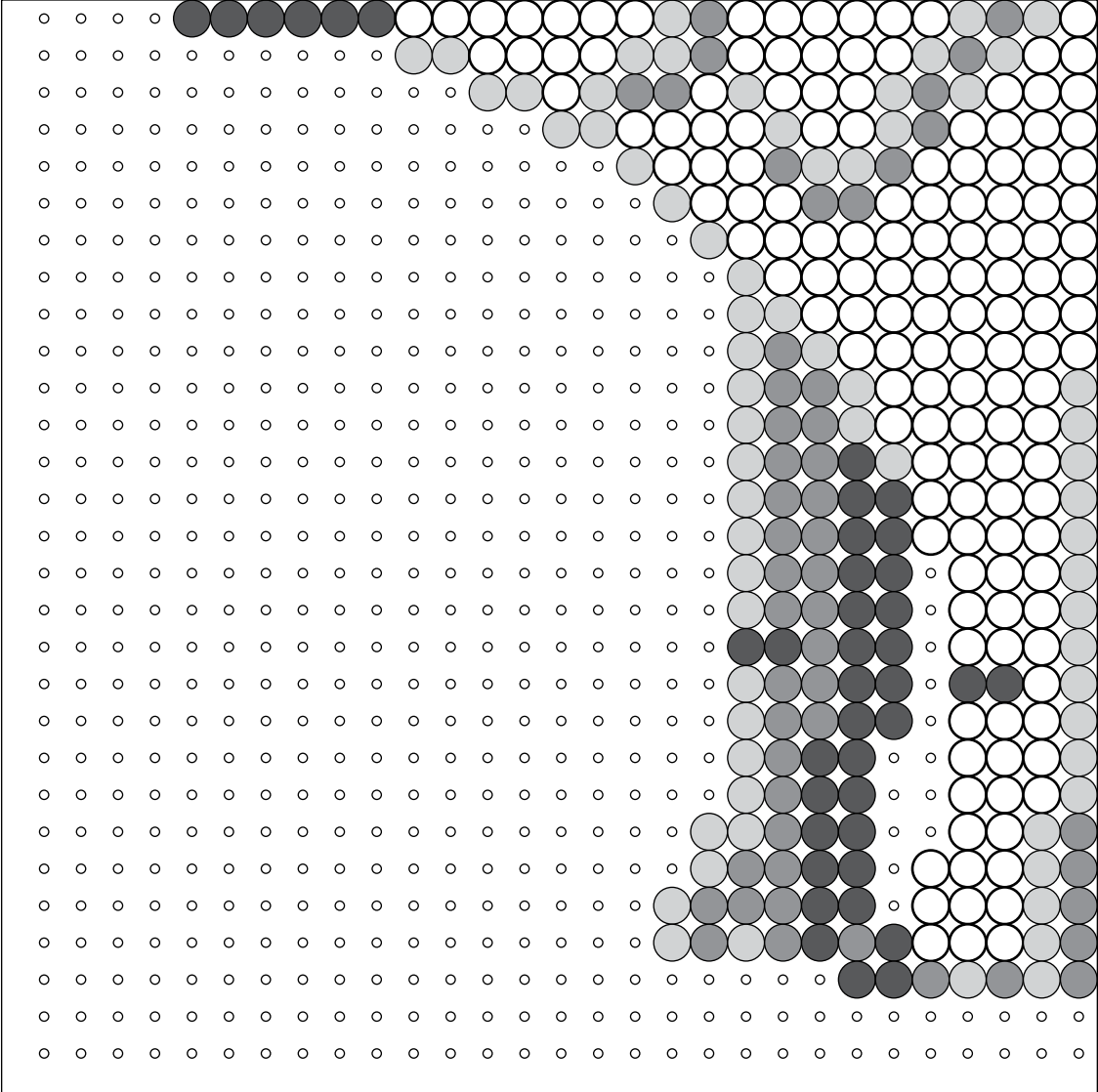
Instructions (cont.)

2. An adult should fuse the designs—you can use our Standard Fusing Method explained here, or for large projects on multiple pegboards such as this, you might prefer to use the Tape Method for Fusing Large Projects. See page 4 for our standard instructions. For the Tape Method instructions, please visit www.perler.com.

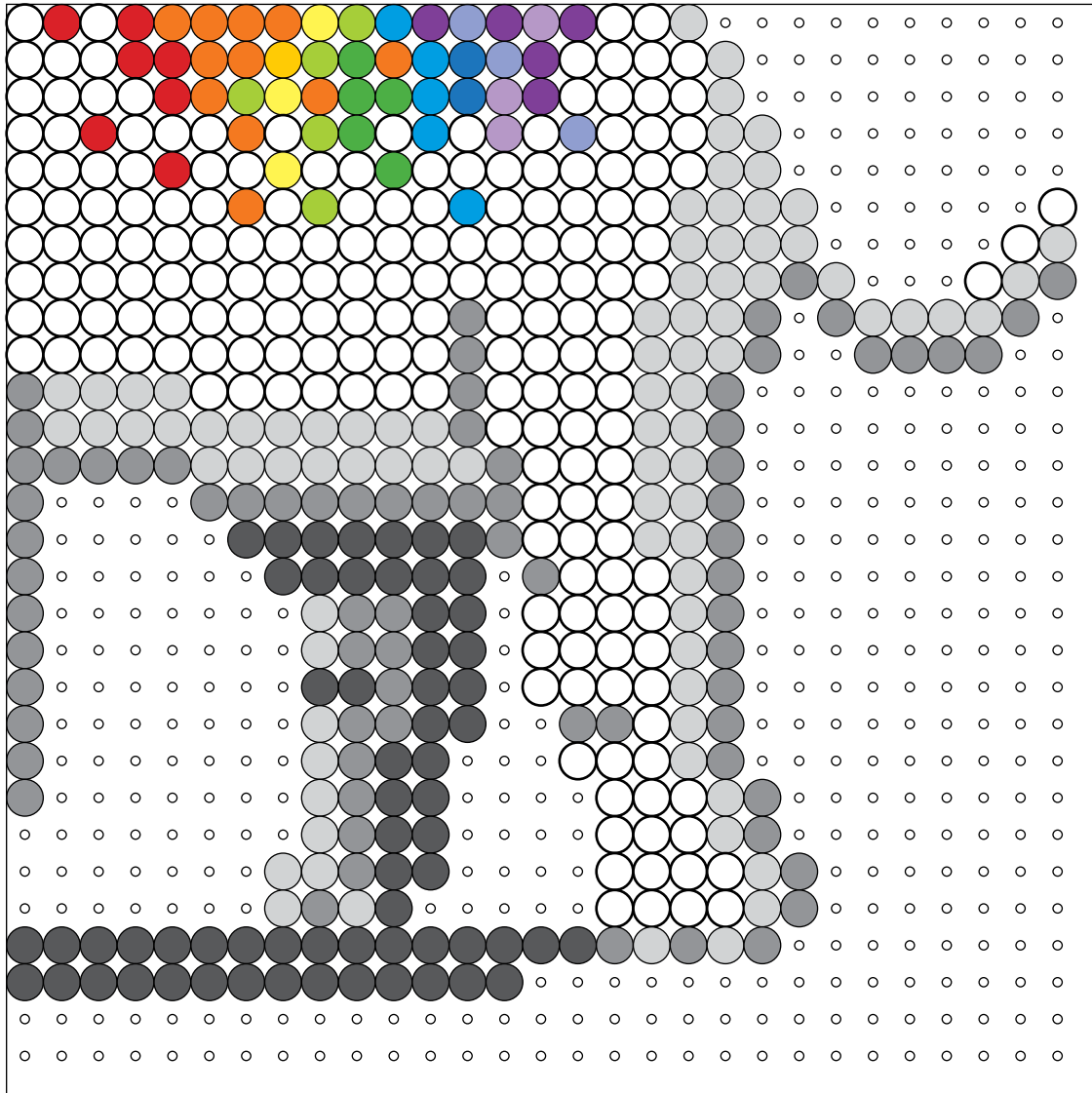
Section 2



Section 3



Section 4



Fusing Instructions—**Only Adults Iron**



1. Place your pegboard on a flat, heat-safe surface.
2. Set a household iron to the medium setting. Place ironing paper over the pegboard. In a circular motion, begin to iron the project. Do not press down with the iron. As the beads begin to fuse, you will see circles of the beads start to show through the paper. When ironed properly, the beads will still have an open center. Let the design cool.
3. Remove the paper and bead design from the pegboard. Flip the design over to expose the non-fused side. Repeat step two. Let cool completely. Your pegboard and ironing paper are reusable.

NOTE: Beads need heat for about 10-20 seconds per side to fuse evenly. Lift the paper occasionally to see how the beads are fusing. Depending on the size of the project, additional heating time may be required.