

### Bead Colors

○ Light gray x 4

● Dark gray x 210

● Gray x 48

● Black x 113

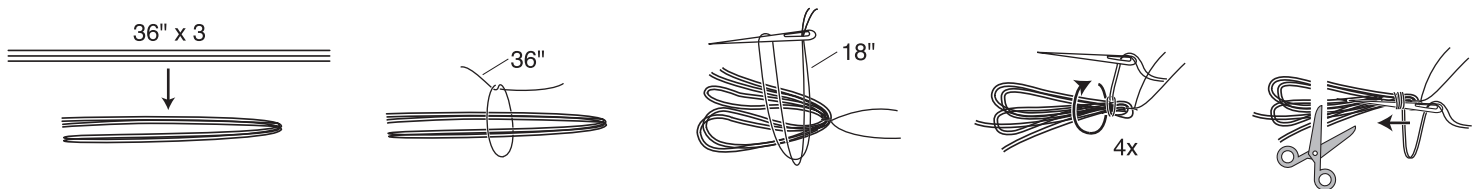
You will need the following lengths of embroidery thread for each tassel/cording hanger:

3-36" pieces - tassel bundle

1-36" piece - tassel tie, which will be made into cording

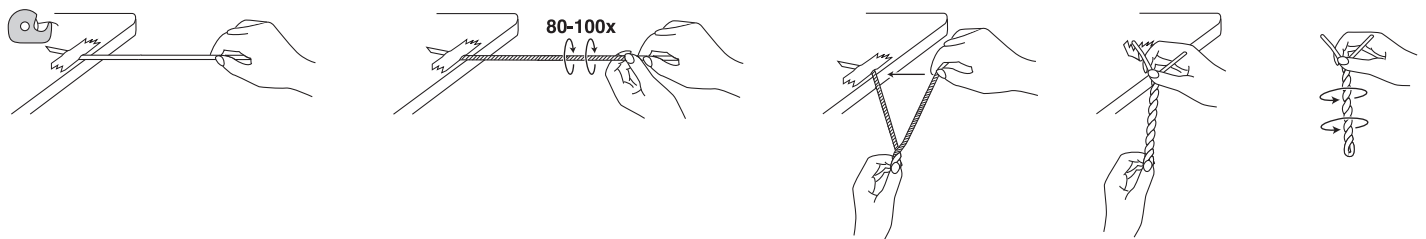
1-18" piece - tassel wrap

Lay the three pieces for the tassel bundle side by side and fold them in half twice. Tie the bundle in the center with the tassel tie. Make sure the ends of the tassel tie are even; you will use them to make cording after the tassel is made. Fold the wrap piece in half and thread the cut ends in the needle. Wrap near one end of the bundle as shown in the diagram. Slide the needle and cut ends of the thread through the wraps. Trim tassel to desired length.



Make cording with the tassel tie. Note: To make the diagrams easier to follow, the tassel is not shown, but the tassel should be in the center of the tassel tie.

Tape one of the tassel tie ends to a table or counter. Twist the other end 80-100 times until the thread is tightly twisted. Grab the middle (tassel) with one hand. Bring the ends together with your other hand. Release the middle and allow the thread to twist. Slide your fingers up and down the cording to even out the twists. Use a small piece of tape to hold the ends of the cording together so the twists don't unwind.



To attach the tassel/cording hangers to the design, slide the taped end of the cording through a bead hole from front to back, then either tie a knot in the cording end or use a dab of craft glue to secure the cording to the back.

To make the loop for hanging the entire assembly, make another piece of cording with a 36" piece of embroidery thread. Attach it through two holes in the top of the grad cap, making the loop the desired size.