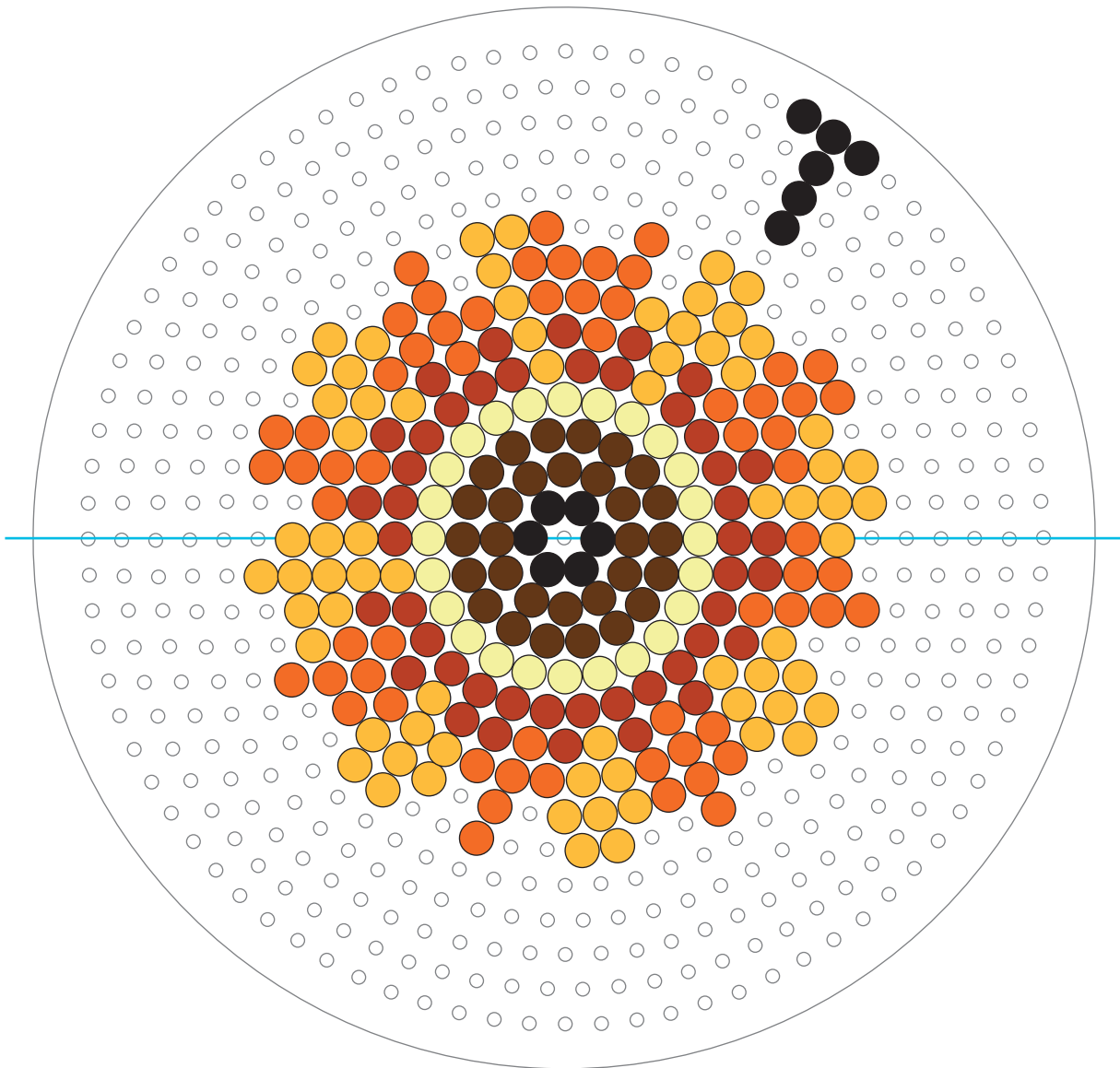









Flower 1 - bottom layer and connector

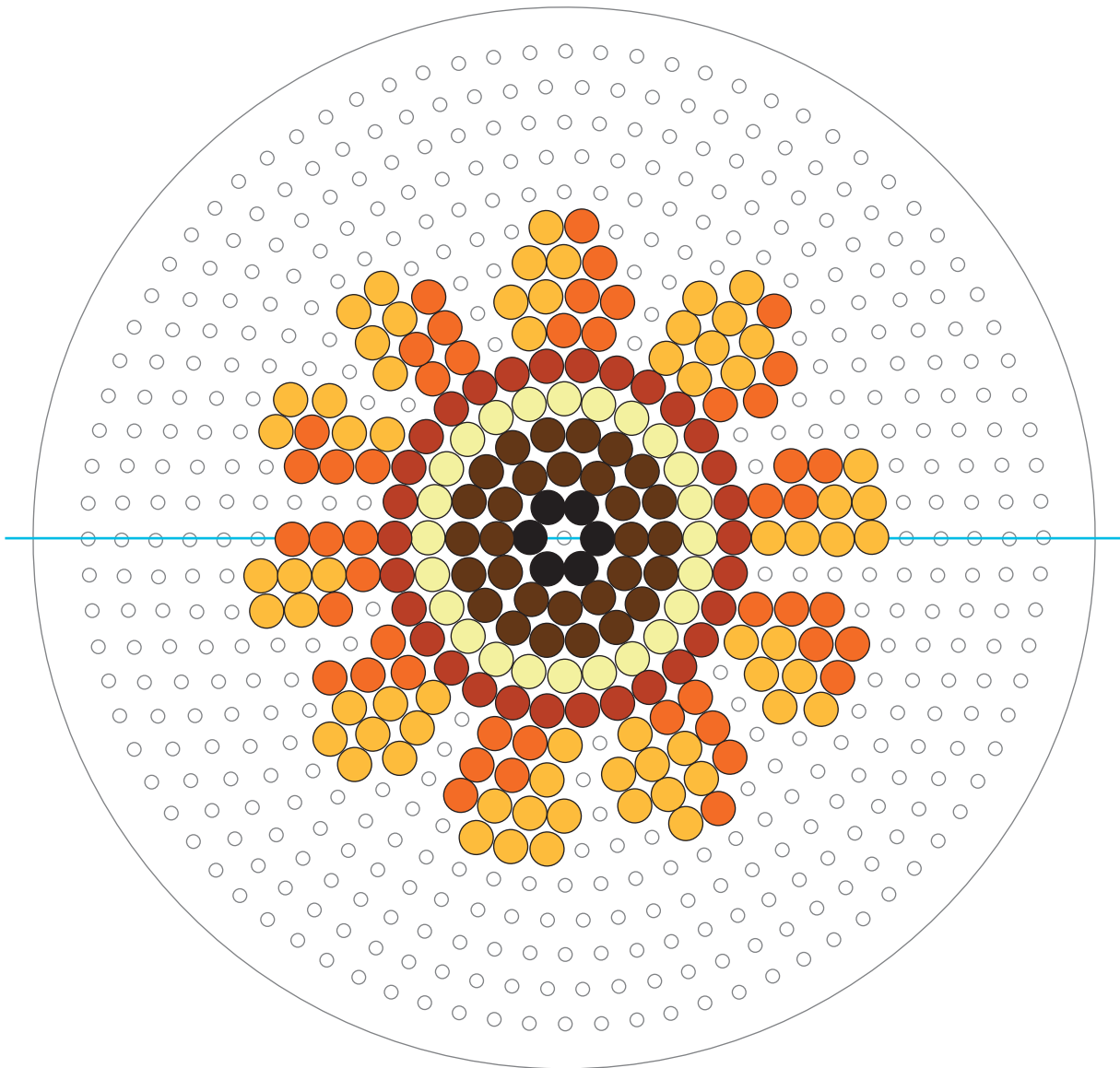


Bead Colors

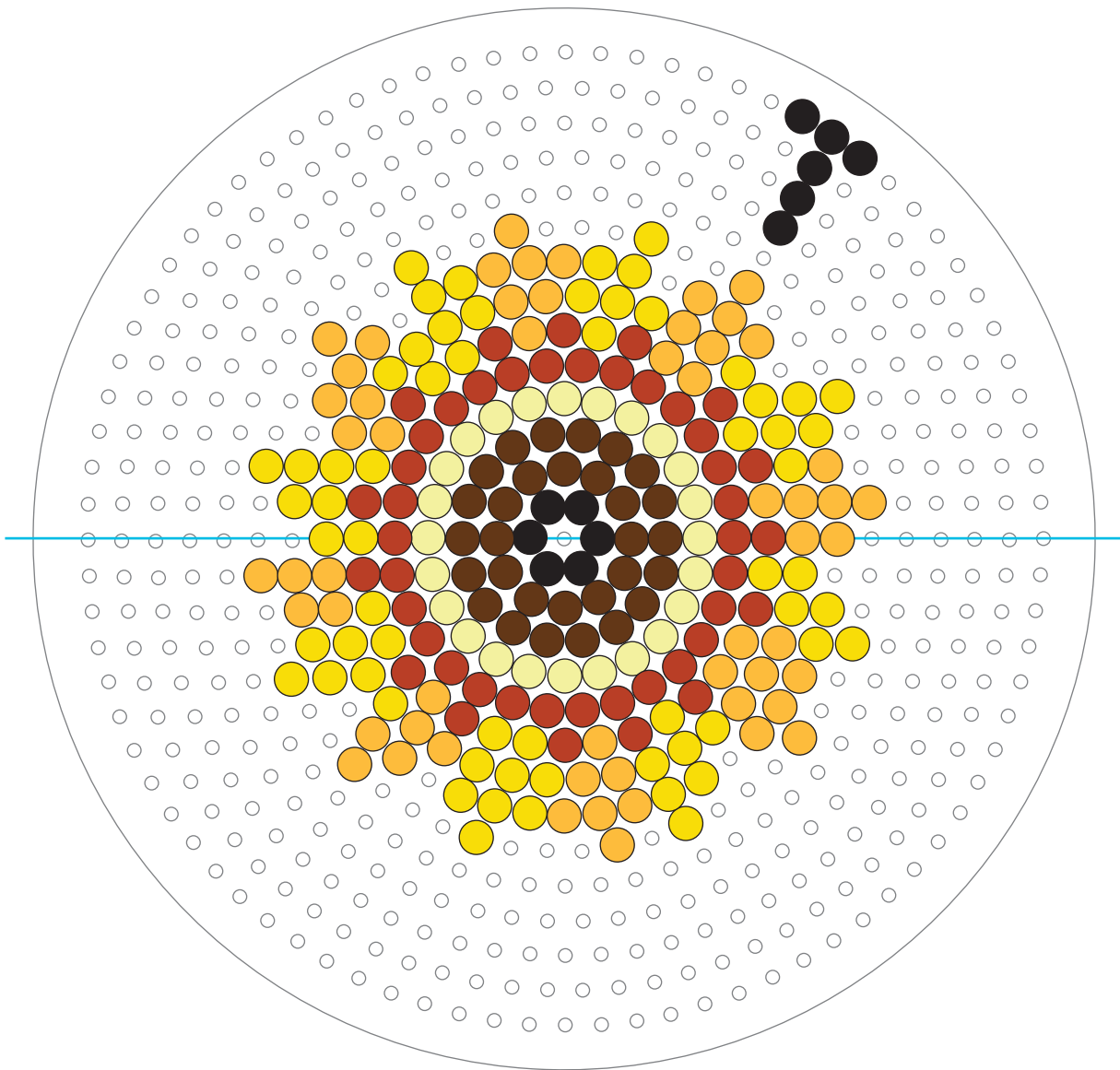
Note: Bead quantities are for making one of each flower.

- | | | | |
|---|-------|---|-------|
|  Pastel Yellow | x 96 |  Rust | x 150 |
|  Yellow | x 117 |  Brown | x 132 |
|  Cheddar | x 252 |  Black | x 60 |
|  Orange | x 110 | | |

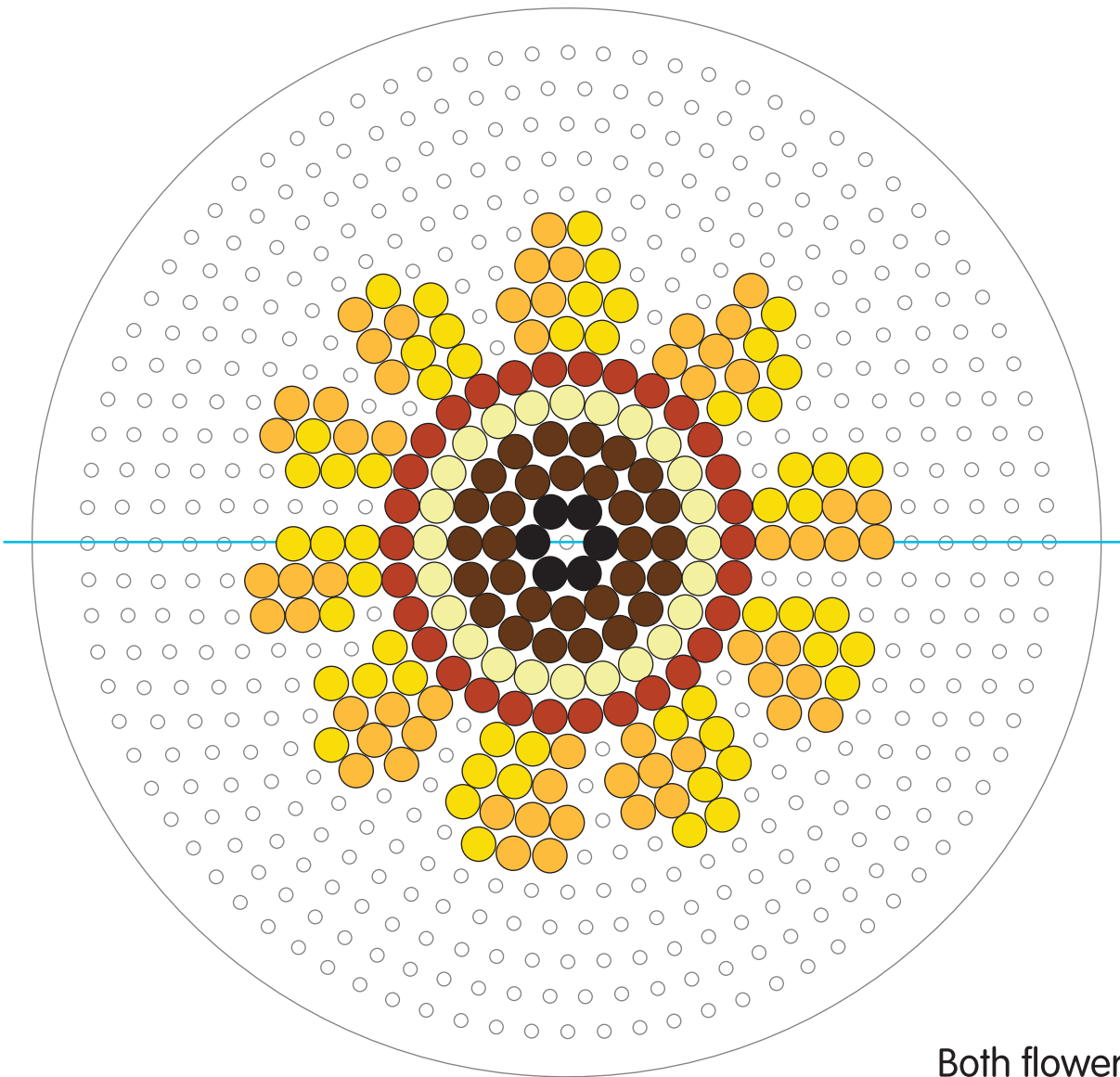
Flower 1 - middle layer



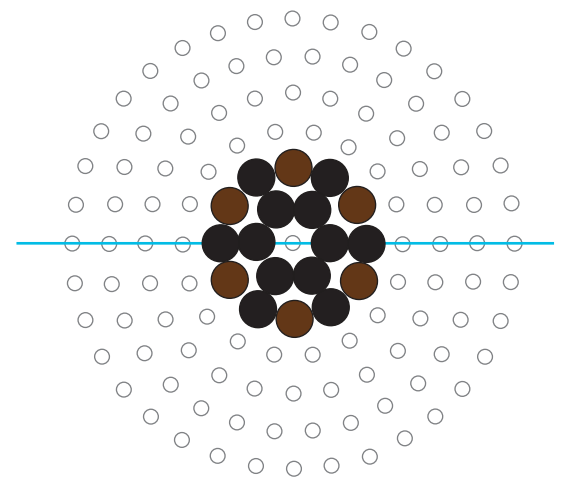
Flower 2- bottom layer and connector



Flower 2- middle layer



Both flowers - top layer



Assemble each flower by inserting the connector through all three layers.

Note: The bottom and middle layers will be slightly curved as explained in the ironing instructions.

